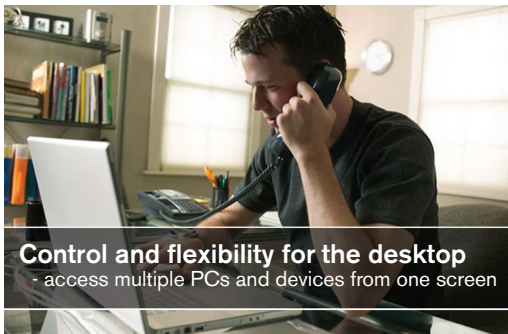


KVM Switching, Server room and Extension Solutions from Avocent



Desktop KVM Switching Solutions



Control and flexibility for the desktop
- access multiple PCs and devices from one screen

Avocent SwitchView® KVM switches provide immediate solutions to issues in the home or small office such as limited desk space, cable clutter, and duplicated keyboards, monitors and mice, by enabling you to use a single keyboard, monitor and mouse to access multiple PC's. SwitchView KVM switches can support combinations of PS/2 and USB PCs.

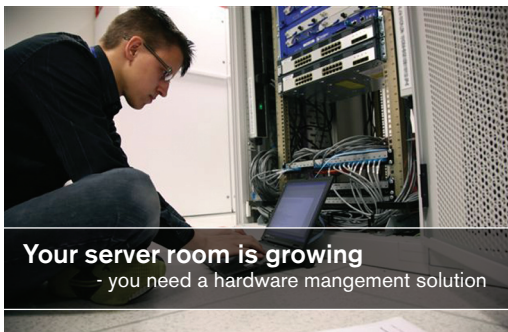
SwitchView multimedia switches allow you to share USB devices, and speakers and a microphone between PCs.

With the SwitchView DVI switch, you access multiple DVI computers and can connect a USB keyboard, mouse and DVI monitor.



Solutions*: SwitchView IC/PC/MM1/MM2/DVI

SMB Server Room Solutions



Your server room is growing
- you need a hardware management solution

Avocent AutoView® switches provide immediate benefits to the SMB (small to medium size business) server room. A single 1U high AutoView KVM switch can manage up to 16 servers providing immediate hardware and space savings.

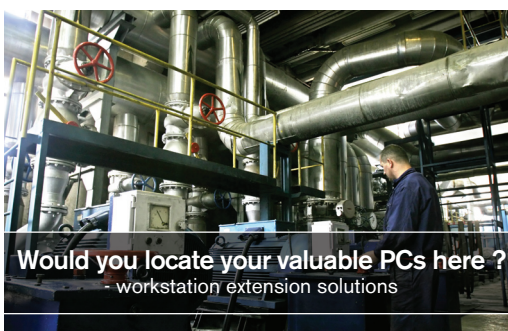
Avocent's SwitchView™ IP remote access device provides an economical way to add remote access capability to your existing KVM switches.



With the SwitchView IP remote access device, you can use your browser to control and reboot your servers anywhere, anytime.

Solutions*: AutoView 1415/1515/2015/2020/2030/3100/3200/ SwitchView IP1020

Workstation Extension Solutions



Would you locate your valuable PCs here ?
- workstation extension solutions

Avocent is a longtime pioneer of extension technologies. The Avocent LongView® extension solutions enable you to separate users from computers with simple connect-and-go ease of installation.



These intelligent product lines compensate for any performance degradation over the extension connection delivering an "at the PC" experience for the user.

Solutions*: LongView 1000P/1000U/1000R/430/830/IP

Ordering details					
DESKTOP KVM SWITCHING	Avocent Part	PCs	Platforms	Resolutions	Devices supported
SwitchView IC	SVM200-EU	2	PS/2	2048 x 1536	n/a
SwitchView PC 2-port	2SVP10-201	2	PS/2	2048 x 1536	n/a
SwitchView PC 4-port	4SVP10-201	4	PS/2	2048 x 1536	n/a
SwitchView MM1 – USB 1.1	2SVP10-201	2	PS/2, USB	2048 x 1536	Speakers/microphone
SwitchView MM1 – USB 1.1	4SVP10-201	4	PS/2, USB	2048 x 1536	Speakers/microphone and USB devices
SwitchView MM2 – USB 2.0	2SVP10-201	2	PS/2, USB	2048 x 1536	Speakers/microphone and USB devices
SwitchView MM2 – USB 2.0	4SVP10-201	4	PS/2, USB	2048 x 1536	Speakers/microphone and USB devices
SwitchView DVI 2-port	2SVDVI10-201	2	USB	1920 x 1200	DVI monitors, speakers/microphone and USB devices
SwitchView DVI 4-port	4SVDVI10-201	4	USB	1920 x 1200	DVI monitors, speakers/microphone and USB devices
SMB Server Room	Avocent Part	Users	Ports	Platforms	Key features
AutoView 1415	AV1415-201	Single	8	PS/2, USB, SUN, Serial	OSD, CAT 5 cabling
AutoView 1515	AV1515-201	Dual	8	PS/2, USB, SUN, Serial	OSD, CAT 5 cabling, dual-user access
AutoView 2015	AV2015-201	Dual	16	PS/2, USB, SUN, Serial	OSD, CAT 5 cabling, dual-user access
AutoView 2020	AV2020-201	Dual	16	PS/2, USB, SUN, Serial	Virtual Media upgrade, dual-user access
AutoView 2030	AV2030-201	Dual	16	PS/2, USB, SUN, Serial	Virtual Media included, dual-user access
AutoView 3100	AV3100-201	Single	16	PS/2, USB, SUN, Serial	Single-user IP connectivity with on-board Web interface
AutoView 3200	AV3200-201	Dual	16	PS/2, USB, SUN, Serial	Dual-user IP connectivity with on-board Web interface
SwitchView IP 1020	SVIP1020-201	n/a	1	n/a	Add remote IP access to KVM switches
Workstation Extension	Avocent Part	Users	Distance	Platforms	Key features
LongView 1000P	LV1000P-201	Single. Add LongView 1000R extender for dual local user	300 metres	PS/2 PCs	Automatic video skew and signal loss compensation. One UTP connection per user. Extends multi-media. Extends serial ports.
LongView 1000U	LV1000U-201	Single. Add LongView 1000R extender for dual local user	300 metres	USB PCs	Automatic video skew and signal loss compensation. One UTP connection per user. Extends multi-media. Extends serial ports.
LongView 1000R	LV1000R-201	Second user LV1000P or LV1000U	300 metres	PS/2 & USB	Add second user up to 300 metres. Supports Companion mode functionality
LongView 430	LV430-201	Transmitter/receiver pair with 2 power supplies	150 metres	PS/2	PS/2 keyboard, mouse, serial device, speakers, microphone
LongView 830	LV830-201	Local and remote, transmitter/receiver pair with 2 power supplies	150 metres	PS/2	PS/2 keyboard, mouse, serial device, speakers, microphone
LongView IP	LVIP-201	Digital extender (keyboard, mouse, digital/analog video, USB media, audio);	max. 1,000 metres	USB, DVI, Audio	Digital extender (keyboard, mouse, digital/analog video, USB media, audio);

Ordering details / Cables			
Cable / SwitchView	Avocent Part No	Description	Length
SwitchView PC	SVP-6 / 9	SwitchView PS2 and VGA cable	1.8m, 2.7m
SwitchView MM1 & 2	SVUSB-6 / 9	SwitchView MM1/MM2 USB, PS2 and Audio cable	1.8m, 2.7m
SwitchView DVI	SVDVI-6 / 9	SwitchView DVI/USB- Audio cable	1.8m, 2.7m
SwitchView 1000	CBL0029 / 0030 / 0031	SwitchView 1000 PS/2 and USB cable	1.8m / 2.7m / 4.5m
Cable / AutoView	Avocent Part No	Description	Length
AutoView Series	PS2IAC-7 / 10 / 15	Integrated PS/2-cable for all AutoView Series	2.1m / 3.0m / 4.5m
AutoView Series	USBIAC-7 / 10 / 15	Integrated PS/2-cable for all AutoView Series	2.1m / 3.0m / 4.5m
AutoView Series	AVRIQ-PS2	VGA/PS2-server module for all AutoView Series	Variable/Requires standard patch cable
AutoView Series	AVRIQ-SRL	Serial server module for all AutoView Series	Variable/Requires standard patch cable and Avocent power supply UPD-201 / 1265886
AutoView Series	AVRIQ-USB	VGA/USB-server module for all AutoView Series	Variable/Requires standard patch cable
AutoView Series	AVRIQ-VSN	VGA/USB-server module for all AutoView Series	Variable/Requires standard patch cable
AutoView Series	DSAVIQ-USB2	Needed for Virtual Media function. VGA/USB2-server module, AutoView, 2020/2030	Variable/Requires standard patch cable
AutoView Series	DSAVIQ-USB2L	Needed for Virtual Media function. VGA/USB2-server module, AutoView, 2020/2030	Variable/Requires standard patch cable



For further information contact
Peter Dutton at Avocent
 Tel: +44 7825 625315
 E-mail: peter.dutton@avocent.com

Avocent, the Avocent logo and The Power of Being There are trademarks or registered trademarks of Avocent Corporation. All other marks are the property of their respective owners. ©2007, Avocent Corporation.