

PRODUCT BRIEF

Intel® Compute Stick
STK1AW32SC
STK1A32SC



INTEL® COMPUTE STICK: PLUG AND PLAY POWER IN THE PALM OF YOUR HAND

Quad-core Intel® Atom™ x5 processor
for balanced performance

The Intel® Compute Stick is a tiny device the size of a pack of gum that can transform any HDMI* TV or display into an entry-level computer.

But it's what's inside that's really incredible: a quad-core Intel® Atom™ x5 processor that gives you balanced performance for work or play. The Intel Compute Stick delivers everything you love about computing in a device that fits in the palm of your hand.

Just plug the Intel Compute Stick into any HDMI TV or monitor, connect your wireless keyboard and mouse, and you're ready to roll. You can even use the Intel® Remote Keyboard app to control your device through your phone or tablet. And with Intel® Dual Band Wireless-AC 7265 you

can instantly and reliably connect and access files in the cloud, along with built-in Bluetooth* 4.0 to connect to wireless peripherals or transfer files to the Compute Stick's on-board storage.

With a brand-new design, this pint-sized powerhouse delivers full-size performance, reliability, and ease of use that lets you work and play when and how you want. It's ready to go out-of-the-box, so you're ready to take your media, games, files, and power applications with you wherever you go.





STK1AW32SC



Pre-installed with Windows® 10

The Intel Compute Stick delivers balanced performance for work or play with the quad-core Intel Atom x5 processor. This tiny device comes pre-installed with Windows® 10, so you can use your favorite applications to stream media, manage photos and files, or create personal projects. And with Intel® HD Graphics, you enjoy fluent playback and stunning HD images.

Connectivity is quick, reliable, and seamless. With two built-in antennas and Intel wireless 802.11ac technology you can connect right out of the box and stream movies while using the built-in Bluetooth 4.0 to easily connect wireless speakers or transfer pictures from your smartphone¹ to the Compute Stick's on-board storage. And now with two USB ports (USB 3.0 and 2.0), you can connect the peripherals you need such as keyboard and mouse.

With the palm-sized Intel Compute Stick, now you can transform any HDMI display into an entry-level computer to keep you productive and entertained wherever you go.



STK1A32SC

With a quad-core Intel® Atom™ processor

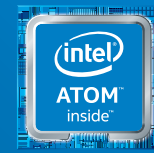
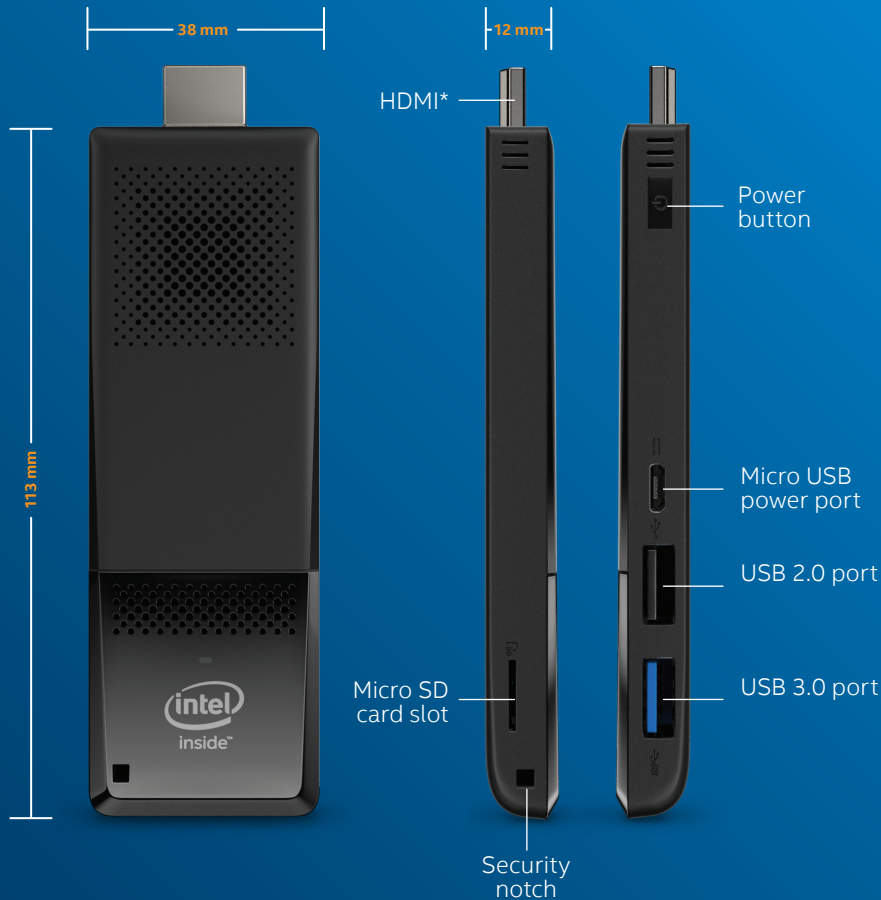
The Intel Compute Stick packs an entry-level computer into a device about the size of a pack of gum. Powered by a quad-core Intel Atom x5 processor, this tiny device delivers balanced performance for business-grade productivity and security.

A cost-effective computer for thin client, digital signage, and PC-like embedded applications, the Intel Compute Stick allows you to install the operating system of your choice for maximum flexibility to fit your usage requirements. With 32 GB of onboard eMMC storage and a micro SD card slot, you can access crucial business files and apps locally whenever you need them. You can even use the Intel® Remote Keyboard app to control your device through your phone or tablet.¹

Connectivity is quick, reliable, and seamless, with Intel wireless solutions. With two built-in antennas and Intel wireless 802.11ac technology you can connect and access files in the cloud while using the built-in Bluetooth 4.0 to easily connect wireless peripherals or transfer files from your smartphone to the Compute Stick's on-board storage. USB 3.0 and 2.0 ports let you connect the peripherals you need such as keyboard, mouse, or an Ethernet adapter.

With the palm-sized Intel Compute Stick, now you can transform any HDMI* display into a full computer customized for your requirements.

INTEL® COMPUTE STICK FEATURES



Quad-core Intel® Atom™
x5 processor

Onboard storage

Onboard memory

Intel® Dual Band
Wireless-AC 7265

Bluetooth* 4.0

HDMI* extension cable

Power adapter

Optimized design for full performance

Intel relentlessly innovates to bring you technology that helps you meet your computing needs. The innovative design of the Intel Compute Stick is fully optimized to maximize performance for your personal and business applications. At home or in the office, now it's easier to work when, where, and how you want. The Intel Compute Stick has the quality and value you've come to expect from Intel in a product designed and built by the company itself.

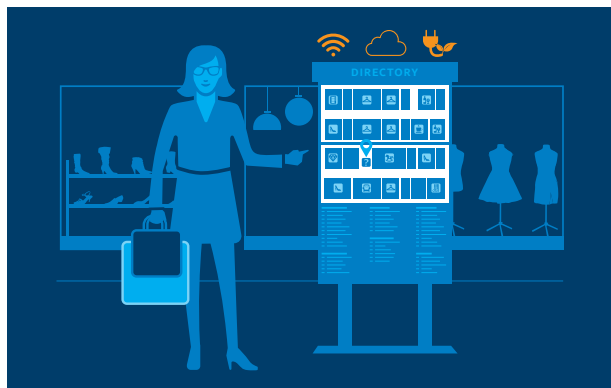
Intel Compute Stick.
Connect. Compute. It's that simple.

Look for Intel® Compute Stick
with Intel Inside® at
www.intel.com/ComputeStick

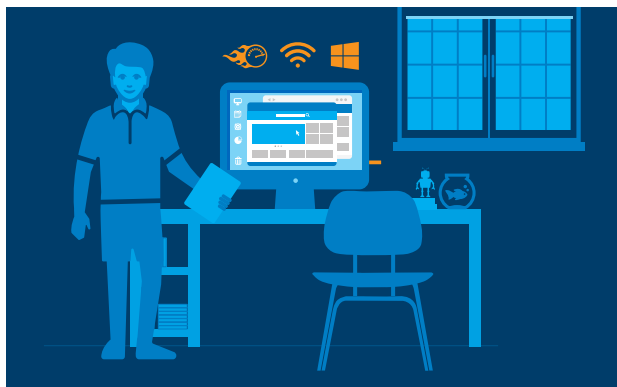
Intel® Compute Stick Usage Models



HOME ENTERTAINMENT



PC-LIKE EMBEDDED



PRODUCTIVITY



THIN CLIENT

TECHNICAL SPECIFICATIONS

Intel® Compute Stick STK1AW32SC, STK1A32SC

PROCESSOR

- Quad-Core Intel® Atom™ x5-Z8300 Processor

GRAPHICS

- Intel® HD graphics
- 1x HDMI* 1.4b

SYSTEM MEMORY

- 2 GB DDR3L 1600 MHz soldered down single-channel memory

STORAGE CAPABILITIES

- 32 GB eMMC storage built-in
- Micro SDXC v3.0 slot with UHS I-Support

PERIPHERAL CONNECTIVITY

- Integrated Wireless 802.11ac (Intel® Dual Band Wireless-AC 7265)
- One USB 3.0 and One USB 2.0
- Bluetooth* 4.0
- Micro SD card slot (up to 128 GB)

AUDIO

- Intel® HD Audio² via HDMI, supporting multi-channel digital audio

MECHANICAL CHASSIS SIZE

- 113 mm x 38 mm x 12 mm

PRE-LOADED OS

- Windows® 10 (STK1AW32SC)
- N/A (STK1A32SC)

POWER REQUIREMENTS

- Micro USB power connector
- 5V, 3A wall-mount AC-DC power adapter

ENVIRONMENT OPERATING TEMPERATURE

- 0° C to +35° C

STORAGE TEMPERATURE

- -40° C to +60° C

¹ Bluetooth file transfer is not supported by all operating systems and is dependent upon phone or tablet capabilities.

² Intel technologies' features and benefits depend on system configuration and may require enabled hardware, software or service activation. Performance varies depending on system configuration. No computer system can be absolutely secure. Check with your system manufacturer or retailer or learn more at www.intel.com.

INFORMATION IN THIS DOCUMENT IS PROVIDED IN CONNECTION WITH INTEL® PRODUCTS. NO LICENSE, EXPRESS OR IMPLIED, BY ESTOPPEL OR OTHERWISE, TO ANY INTELLECTUAL PROPERTY RIGHTS IS GRANTED BY THIS DOCUMENT. EXCEPT AS PROVIDED IN INTEL'S TERMS AND CONDITIONS OF SALE FOR SUCH PRODUCTS, INTEL ASSUMES NO LIABILITY WHATSOEVER, AND INTEL DISCLAIMS ANY EXPRESS OR IMPLIED WARRANTY, RELATING TO SALE AND/OR USE OF INTEL PRODUCTS INCLUDING LIABILITY OR WARRANTIES RELATING TO FITNESS FOR A PARTICULAR PURPOSE, MERCHANTABILITY, OR INFRINGEMENT OF ANY PATENT, COPYRIGHT, OR OTHER INTELLECTUAL PROPERTY RIGHT.

Intel products are not intended for use in medical, life-saving, or life-sustaining applications. Intel may make changes to specifications and product descriptions at any time, without notice. All products, dates, and figures specified are preliminary based on current expectations, and are subject to change without notice. Availability in different channels may vary. Actual Intel® Compute Stick may differ from the image shown.

Copyright © 2015 Intel Corporation. All rights reserved. Intel, the Intel logo, Intel Inside, the Intel Inside logo, Intel Experience What's Inside, the Intel Experience What's Inside logo, and Intel Atom are trademarks of Intel Corporation in the U.S. and/or other countries.

*Other names and brands may be claimed as the property of others. 1115/BCP/HBD/PDF

333466-001US