

# ROG-STRIX-RX5500XT-O8G-GAMING

## TAKE FLIGHT

### ASUS Exclusive Innovations

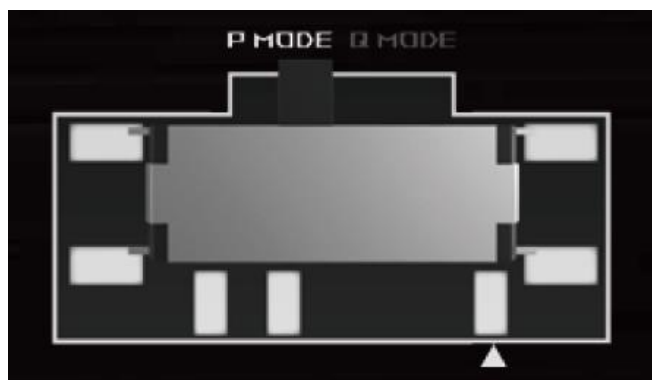
#### ■ Axial-tech Fan Design

A smaller fan hub facilitates longer blades and a barrier ring that increases downward air pressure.



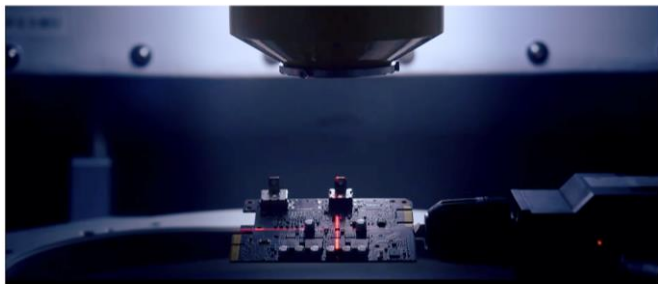
#### ■ Dual BIOS

Toggle between Quiet and Performance BIOS profiles with a hardware switch.



## ■ Auto-Extreme Technology

An automated manufacturing process that enhances reliability.



## ■ Aura Sync

Customize and sync lighting effects with other compatible hardware.



## ■ ASUS FanConnect II

A hybrid-controlled fan header enables optimal system cooling.



\*Image for reference only

## ■ Software Suite

Tweak performance with GPU Tweak II, stream games with XSplit Gamecaster, get a better connection to game servers with wtfast, and earn passive income with Quantumcloud.



\*Free 1-year premium XSplit Gamecaster.

\*Six-month wtfast premium license\* — a USD\$53.95 value — to let user enjoy online gaming that's free from lag, latency and lost packets.

ASUS Features

**OC**  
Edition

- **OC Edition:**  
TBD MHz GPU boost clock for outstanding gaming experience.

**8** <sup>GDDR6</sup>  
**GB**  
Memory

- **8GB GDDR6 Memory:**  
On-board memory for the best gaming experience & the best resolution.

**0dB**   
Silent Gaming

- **0dB Technology:**  
An advanced controller brings fans to a standstill below 60 Celsius, letting you enjoy light gaming in relative silence.

Graphics GPU Features

AMD  
RADEON  
**FreeSync**

- **FreeSync:**  
Offers stutter-free and tear-free gaming.

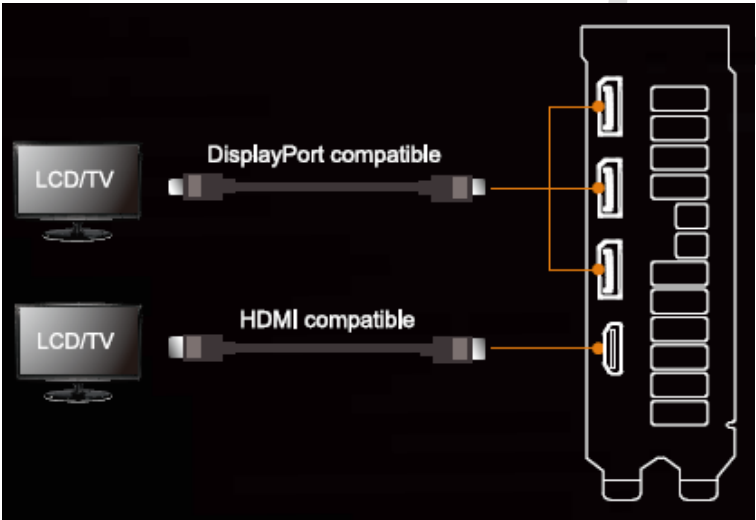
AMD  
RADEON  
**FreeSync2 HDR**

- **FreeSync2 HDR:**  
Meticulous monitor certification process to ensure exceptional visual experiences.

PCIe  
**4.0**  
PCI EXPRESS SUPPORT

- **PCI Express 4.0**  
Enables two times the bandwidth compared to PCI Express 3.0. Get ready for the next generation of PC gaming.

I/O Specifications



## Hardware Specification

Model	ROG-STRIX-RX5500XT-O8G-GAMING
Graphics Engine	AMD RADEON™ RX5500 XT
Stream Processors	1408
OpenGL®	OpenGL® 4.6
Engine Clock	Gaming mode: TBD MHz (Boost clock) / TBD MHz (Game clock*) / TBD MHz (Base clock)
Memory Interface	128 bit
Video Memory	8GB GDDR6
Memory Clock	14Gbps
Power connectors	1x 8 pin
I/O	1x Native HDMI 2.0b 3x Native DisplayPort 1.4
HDCP compliant	HDMI: HDCP 1.4 or 2.3 DisplayPort: HDCP 1.1 or 2.3
Digital Max Resolution	7680 x 4320
Maximum Display Support	4
NVLink / Crossfire Support	N/A
Recommended PSU	450 W
Bus Standard	PCIE 4.0
Package Contents	1 x Speedsetup Manual 1 x ROG Velcro Hook & Loop
Software Bundled	ASUS GPU Tweak II & Driver, please download all software from the support site.
Slot	TBD
Dimension	
Card Size (cm/inch)	TBD
Color Box (mm)	405 x 233 x 88.5 mm
Weight	
Single Card (KG)	TBD
Product Weight (with packing) (KG)	TBD
Note	<p>*Game Frequency is the expected GPU clock when running typical gaming applications. Actual individual game clock results may vary.</p> <p>All specifications are subject to change without notice. Please check with your supplier for exact offers. Products may not be available in all markets. If you do not</p>

	use the latest and current specifications of ASUS products, you shall be liable for all loss and damage claimed by third party to ASUS based on false advertising or any other issues caused from using false specifications of ASUS products.
--	--

FOR ACGG ONLY