

CHOPIN

Small, smart, sleek and spectacular!

Chopin is an ultra slim form factor case designed for the most efficient and user friendly experience. It is only 3.3 liters in size, but comes with various multi-functional features. It has everything you need, and nothing you don't.



Stylish Exterior

Chopin's modern and vibrant design makes Chopin an ideal HTPC build for your desk or living room.



Sleek Aluminum Exterior

Chopin features a 4mm brushed aluminum shell that complete a clean and sleek chassis frontal.



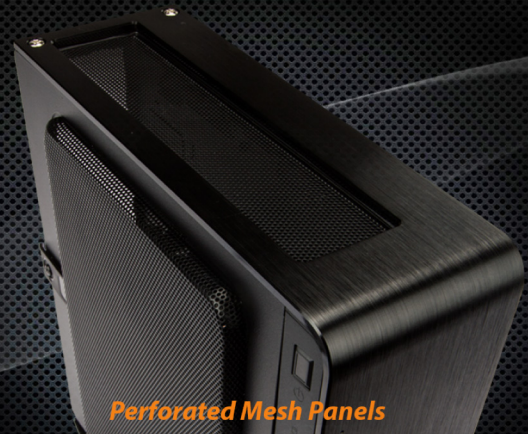
Customizable I/O Panel

Four color I/O stripes allows you to customize your own case with your unique style.



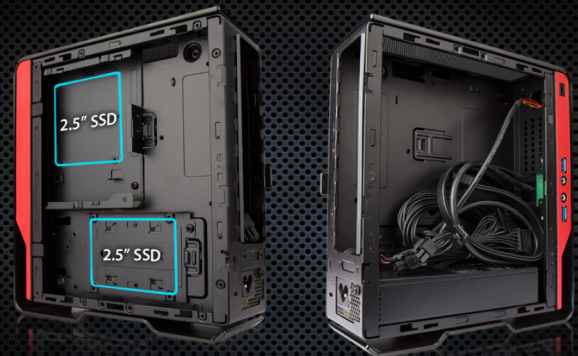
150W 80 PLUS Bronze Adapter Included

A small, yet powerful 150 watt adapter features low noise and maximum efficiency.



Perforated Mesh Panels

The top and side mesh panel design enhances the heat dissipation and provides excellent ventilation.



Space Savvy Design

Innovative dual layout structure with 2 x 2.5" drive bays located at the other side of motherboard main plate for maximum expandability in a compact size.

Specifications

Case Size	Mini-ITX
Material	Aluminum, SECC
Internal Drive Bays	2.5" x 2
MB Form Factor	Mini-ITX (Max: 6.7" x 6.7")
Power Supply	150W Internal PSU Included
I/O Ports	USB 3.0 x 2 HD Audio
CPU Heatsink	Supports CPU Heatsink up to 43mm (From CPU Die Surface to Side Panel) CPU Heatsink up to 51mm (From Motherboard to Side Panel)
Dimensions (H x W x D)	244 x 84 x 217 mm 9.6" x 3.3" x 8.6"
Net Weight	2.2 kg
Gross Weight	2.5 kg

* In Win products comply with RoHS regulations
* Specifications may vary based on different regions



CONTEMPORARY & INNOVATIVE IN WIN
www.inwin-style.com