

SPECIFICATION



ESD15023134

HD500



全漢企業股份有限公司
FSP TECHNOLOGY INC.

台灣 桃園市建國東路 22 號
NO.22, Jianguo E. Rd., Taoyuan City, Taiwan, R.O.C.
TEL:+886-3-375-9888 FAX:+886-3-375-6966

SPECIFICATION

HD500

9PA500AV00

**Main Feature:
Meet 2013 ErP
Meet 80Plus on 230Vac-in
Active PFC Circuit
ATX 2.3 Version**

Sep. 23, 2015

REV : 1.04



全漢企業股份有限公司
FSP TECHNOLOGY INC.

MODEL: HD500

Revision History

<u>Rev</u>	<u>Description</u>	<u>Date</u>	<u>Author</u>
1.0		2015/05/7	呂玉嬋
1.01	更正如下 (1) +3.3V & +5V total output not exceed 110W. (2) Maximum combined current for the +12V outputs shall be 38A .	2015/05/08	呂玉嬋
1.02	1).新增 2.2. SAFETY:CB / TUV / CE / EMC / KC / RCM 2).封面修正 Meet 80Plus on 230Vac-in 3).新增說明 3.4.2 Standby Power Consumption (+5Vsb) 4).新增 Condition 10.	2015/08/11	呂玉嬋
1.03	3.4.2 Standby Power Consumption (+5Vsb): 由 Efficiency > 55% @ 5Vsb/55mA & 230Vac input(2014 Lot3) 修改為 Efficiency > 55% @ 5Vsb/550mA & 230Vac input(2014 Lot3)	2015/08/26	呂玉嬋
1.04	(1).修改 Condition 條件 (2).修改 4.9 HOLD-UP TIME (@Condition_10)→4.9 HOLD-UP TIME (@Condition_12) (3).修改 2.1. EMI REGULATORY&2.2. SAFETY (4).修改2.1. EMI REGULATORY&2.2. SAFETY (5). 3.1. AC INPUT 由 Vin 264 continue output. 修改為 Vin 265 continue output.	2015/09/23	呂玉嬋

1. GENERAL DESCRIPTION AND SCOPE

This is the specification of Model **HD500** AC-line powered switching power supply with active PFC (Power Factor Correction) circuit, meet EN61000-3-2 features. Also, 5Vsb power is less than $0.5W_{input}$ at power off mode (PS_ON input at high state) which is comply with ErP Lot 6 year 2013 requirement.

The specification below is intended to describe as detailedly as possible the functions and performance of the subject power supply. Any comment or additional requirements to this specification from our customers will be highly appreciated and treated as a new target for us to approach.

2. REFERENCE DOCUMENTS

The subject power supply will meet the EMI requirements and obtain main safety approvals as following:

2.1. EMI REGULATORY

CISPR 22 Class B 230Vac Operation

2.2. SAFETY

CB : IEC 60950-1 :2005(Second Edition)+Am 1:2009 + Am2:2013

TUV: EN 60950-1 2nd+A11+A1+A12+A2

CE &EMC :

EN 55022: 2010 / AC: 2011

CISPR 22:2008(Ed 6.0)

AS/NZS CISPR 22: 2009 + A1 :2010

EN 61000-3-2: 2014

EN 61000-3-3: 2013

EN 55024: 2010

(IEC 61000-4-2: 2008; IEC 61000-4-3: 2006 + A1: 2007 + A2: 2010; IEC 61000-4-4: 2012;

IEC 61000-4-5: 2014; IEC 61000-4-6: 2013; IEC 61000-4-8: 2009; IEC 61000-4-11 : 2004)

KC : K 60950-1

RCM

3. INPUT ELECTRICAL SPECIFICATIONS

3.1. AC INPUT

Parameter	Min.	Nom.	Max.	Unit
V _{in} (230VAC)	180	230	265	VAC _{rms}
V _{in} Frequency	47	50	63	HZ

◆ Nominal voltages for test purposes are considered to be within $\pm 1.0V$ of nominal.

V_{in} 160 derating to 80% of full load output, V_{in} 180 to full load output.

V_{in} 300 input continue output at least 10 minutes. V_{in} 265 continue output.

3.2. INRUSH CURRENT

Maximum inrush current from power-on (with power on at any point on the AC sine) and including, but not limited to, three line cycles, shall be limited to a level below the surge rating of the input line cord, AC switch if present, bridge rectifier, fuse, and EMI filter components. Repetitive ON/OFF cycling of the AC input voltage should not damage the power supply or cause the input fuse to blow.

3.3. INPUT LINE CURRENT & POWER FACTOR (P.F.)

(At Full load)

AC input	Input line current	P.F.@ Full Load	P.F.@ Pin=75W
230V	< 4.0Amps – rms	> 0.95	> 0.65

3.4. EFFICIENCY

3.4.1 General

Under the load conditions defined in Table 1. and Table 2. The loading condition for testing efficiency shown in Table 1 represents a fully loaded system. a ~ 50% (typical) loaded system. and a ~ 20% (light) loaded system.

Table 1. Loading Table for Efficiency Measurements

500W(loading shown in Amps)					
Loading	+12V	+5V	+3.3V	-12V	+5Vsb
FULL	32.51	11.34	11.34	0.43	2.14
TYPICAL	16.25	5.67	5.67	0.21	1.07
LIGHT	6.5	2.27	2.27	0.09	0.43

Table 2. Minimum Efficiency Vs Load

Loading	Voltage	Full	Typical	Light
Required Minimum Efficiency	230V	85%	88%	85%

3.4.2 Standby Power Consumption (+5Vsb):

Efficiency $\geq 45\%$ @ 5Vsb/45mA & 230Vac input (2013 Lot 6)

Efficiency $> 55\%$ @ 5Vsb/550mA & 230Vac input (2014 Lot3)

Efficiency $> 70\%$ @ 5Vsb/1A & 230Vac input

Efficiency $> 70\%$ @ 5Vsb/2.5A & 230Vac input

PS_ON input signal @ High State

4. OUTPUT ELECTRICAL REQUIREMENTS**4.1. OUTPUT VOLTAGE AND CURRENT RATING**

Output	MINIMUM LOAD	NORMAL LOAD	MAXIMUM LOAD	PEAK LOAD	LOAD REG.	LINE REG.	Ripple & Noise
+3.3V	0.15A	12A	20A		$\pm 5\%$	$\pm 1\%$	50mV P-P
+5V	0.1A	12A	20A		$\pm 5\%$	$\pm 1\%$	50mV P-P
+12V	0.2A	28A	38A		$\pm 5\%$	$\pm 1\%$	120mV P-P
-12V	0A	0.25A	0.5A		$\pm 10\%$	$\pm 1\%$	120mV P-P
+5VSB	0A	1.25A	2.5A		$\pm 5\%$	$\pm 1\%$	50mV P-P

(1) +3.3V & +5V total output not exceed 110W.

(2) Maximum combined current for the +12V outputs shall be 38A.

Voltages and ripple are measured at the load side of mating connectors with a 0.1 uF monolithic ceramic capacitor paralleled by a 10 uF electrolytic capacitor across the measuring terminals.

4.2. LOAD CAPACITY SPECIFICATIONS

The cross regulation defined as follows, the voltage regulation limits DC include DC Output ripple & noise.

LOAD	+3.3V	+5V	+12V	-12V	+5Vsb
Condition_1	2A	2A	6A	0.1A	0A
Condition_2	0.15A	0.1A	0.2A	0A	0A
Condition_3	0.15A	0.1A	0.2A	0A	2.5A
Condition_4	20A	5A	35A	0A	2.5A
Condition_5	5 A	4 A	38A	0A	1.5A
Condition_6	3A	20A	32A	0.5A	2A
Condition_7	5A	4A	38A	0	1.5A
Condition_8	10A	10A	35A	0A	0A
Condition_9	17A	11A	32A	0A	1A
Condition_10	5A	5A	38A	0A	1A
Condition_11	10A	10A	34A	0.4A	1A
Condition_12	9 A	9A	27A	0.3A	1.7A

4.3. OVER VOLTAGE PROTECTION

Voltage Source	Protection Point
+3.3V	3.76V-5.2V
+5V	5.75V-7.5V
+12V	13.5V-16.5V

4.4. OVER CURRENT PROTECTION

OUTPUT VOLTAGE	Max. over current limit
+3.3V	45A
+5V	45A

OCP test load condition:+3.3V/3A ; +5V/3A ; +12V/8A ; +5Vsb/0.5A

4.5. OVER POWER PROTECTION

The power supply shall be shut down and latch off, when the output wattage of the power supply is higher from 910W to 1050W.

4.6. SHORT CIRCUIT PROTECTION

Output short circuit is defined to be a short circuit load of less than 0.1 ohm.

In the event of an output short circuit condition on +3.3V, +5V, +12V or -12V output, the power supply will shutdown and latch off without damage to the power supply. The power supply shall return to normal operation after the short circuit has been removed and the power switch has been turned off for no more than 2 seconds.

4.7. POWER SIGNAL

POWER GOOD @230V, FULL LOAD	100 –500mSec.
POWER FAIL @230V, FULL LOAD	1 mSec. minimum

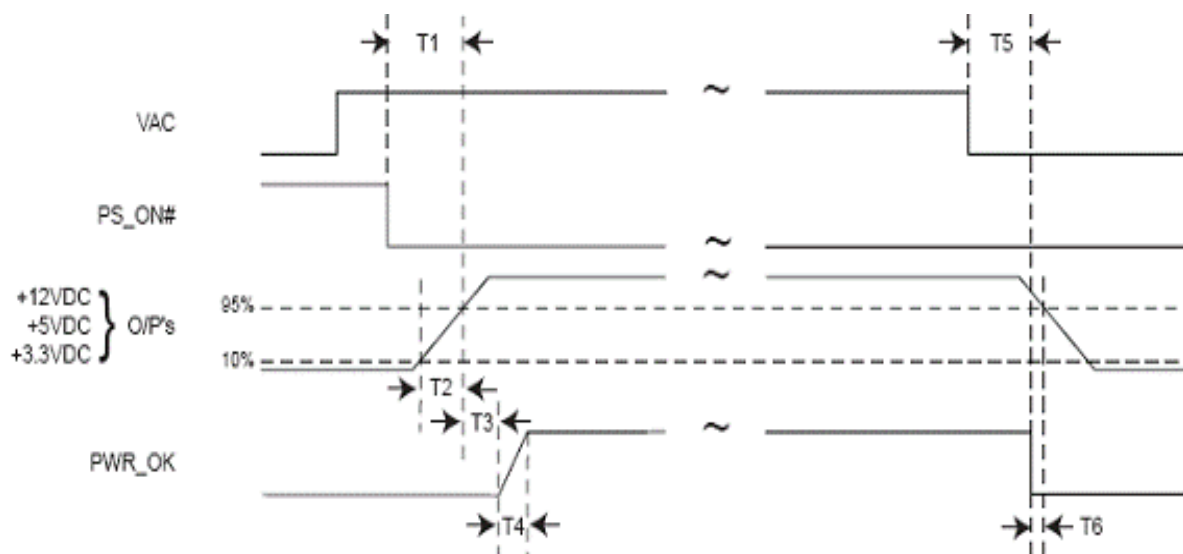


Figure:

T1: Power-on time shall be less than 500 ms ($T1 < 500$ ms).

T2: Rise time : 3 ms to 20 ms ($3 \text{ ms} \leq T2 \leq 20$ ms).

T3: Power-ok delay time: $100 \text{ ms} < T3 < 500$ ms

T4: Power-ok rise time: $T4 \leq 10$ ms

T5 + T6: AC loss to PWR_OK hold-up time

4.8 Rise Time

OUTPUT RISE TIME

(10% TO 90% OF FINAL OUTPUT VALUE, @ FULL LOAD of Table 1.)

230V-rms

+ 3.3Vdc : 20ms Maximum

+ 5Vdc : 20ms Maximum

+ 12Vdc : 20ms Maximum

+ 5Vsb : 20ms Maximum

- 12Vdc : 20ms Maximum

4.9 HOLD-UP TIME (@Condition_12)

230V / 50Hz : 17 mSec. Minimum.

The output voltage will remain within specification, in the event that the input power is removed or interrupted, for the duration of one cycle of the input frequency. The interruption may occur at any point in the AC voltage cycle. The power good signal shall remain high during this test.

5. FAN NOISE REQUIREMENTS

5.1. The subject power supply is cooled by a self-contained, 120mm, 12VDC fan.

6. ENVIRONMENTAL REQUIREMENTS

The power supply will be compliant with each item in this specification for the following Environmental conditions.

6.1. TEMPERATURE RANGE

Operating	+10 to +40 deg. C
Storage	-20 to +80 deg. C

6.2. HUMIDITY

Operating	5 –95% RH, Non-condensing
Storage	5 –95% RH, Non-condensing

6.3. VIBRATION

Random Vibration

0.01g²/ Hz at 5 Hz, sloping to 0.02g²/ Hz at 20 Hz, and maintaining 0.02g²/ Hz from 20Hz to 500Hz. The area under the PSD curve is 3.13gRMS.

The duration shall be 20 minutes per axis for all three axes on all samples.

6.4. GROUND LEAKAGE CURRENT

The power supply ground leakage current shall be less than 3.5 mA.

6.5. RELIABILITY

The power supply reliability, when calculated by MIL-HDBK-217; latest revision, are exceed 100,000 hours with all output at maximum load and an ambient temperature of 25°C.

6.6. DIELECTRIC STRENGTH

Primary to Frame Ground : 1800 Vac for 1 sec.

Primary to Secondary : 1800Vac for 1 sec

6.7. INSULATION RESISTANCE

Primary to Frame Ground : 20 Meg.ohms Minimum

Primary to Secondary : 20 Meg.ohms Minimum

7. LABELLING

Label marking will be permanent, legible and complied with all agency requirements.

7.1. MODEL NUMBER LABEL

Labels will be affixed to the sides of the power supply showing the following:

- Manufacturer's name and logo.
- Model no., serial no., revision level, location of manufacturer.
- The total power output and the maximum load for each output.
- AC input rating.

8. MECHANICAL SPECIFICATIONS

The mechanical drawing of the subject power supply, which indicate the form factor, location of the mounting holes, location, the length of the connectors, and other physical specifications of the subject power supply. Please refer to the attachment drawing.