

FTC21

A weatherproof IP55 Fiber-to-Copper converter with smart management capabilities for your fiber and Ethernet setups.

The **FTC21** is not just a simple media converter. It runs a full version of **SwOS**, offering advanced management features:

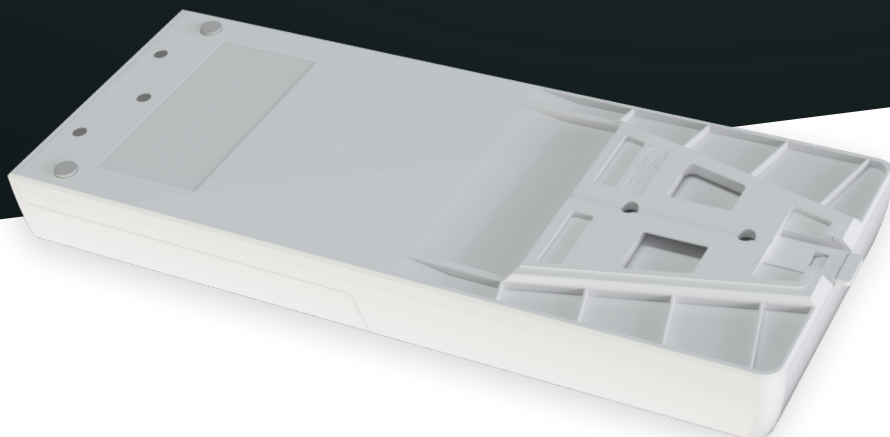
- Interface monitoring and management
- VLAN support
- SNMP reporting
- Basic traffic shaping
- Advanced packet filtering with Access Control Lists - allowing for packet filtering, accounting, and VLAN tagging based on Layer 2, 3, and 4 protocol header conditions.

This compact device is housed in a **weatherproof IP55 enclosure**, making it suitable for outdoor and harsh environments.

Powering is simple and flexible, with both **PoE-in** and a **DC jack** that support 24-57V. The FTC21 is highly efficient, consuming only **3W** without attachments and up to **4W fully loaded**.

It comes with everything you need for installation, including a **48V power adapter**, a **PoE injector**, and a **ceiling mount and fastening set**.

For reliable, smart Fiber-to-Copper conversion, the **FTC21** is the ideal choice.



Looking to convert 10-Gigabit connections?



Check out the FTC11XG!

• Specifications

Product code	FTC21
Number of 1G Ethernet ports	2
Number of 1G SFP ports	1 (2.5G supported)
Switch chip model	88E6341
Dimensions	254 x 97 x 35 mm
Operating system	SwOS Lite
Operating temperature	-40°C to +70°C

• Powering

Number of DC inputs	2 (PoE-In, DC jack)
PoE-In input Voltage	24-57 V
DC jack input Voltage	24-57 V
Power adapter nominal voltage	48 V
Power adapter nominal current	0.95 A
PoE-In	802.3af/at
Max power consumption without attachments	3 W
Max power consumption	4 W

• Included parts



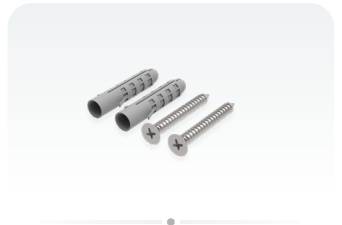
48 V 0.95 A power adapter



Gigabit PoE injector



Ceiling mount



Fastening set