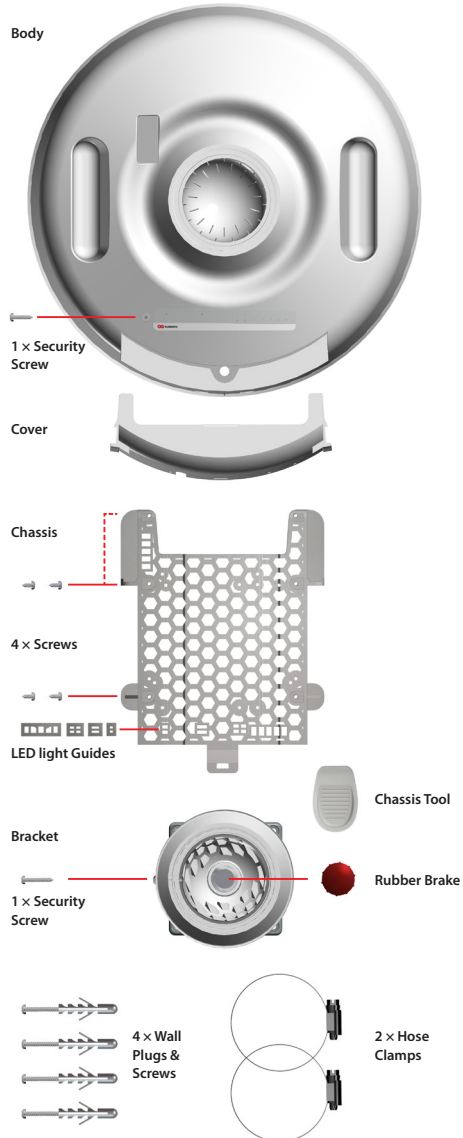
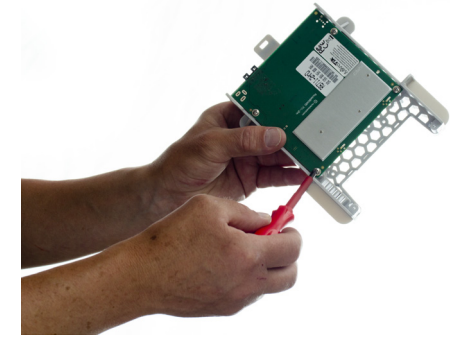
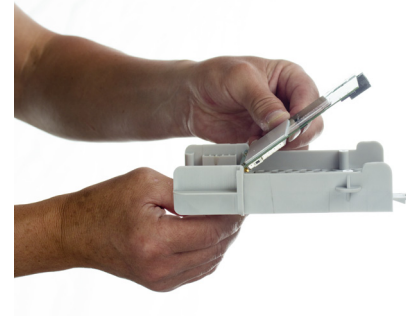
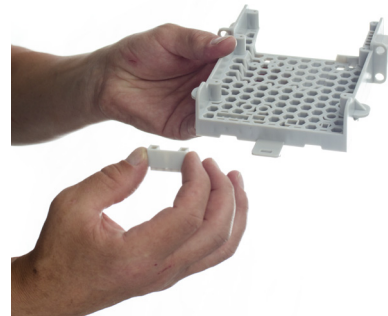


StationBox® XL Installation Instructions

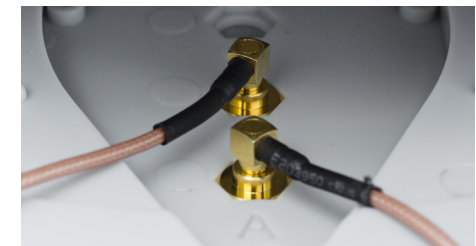
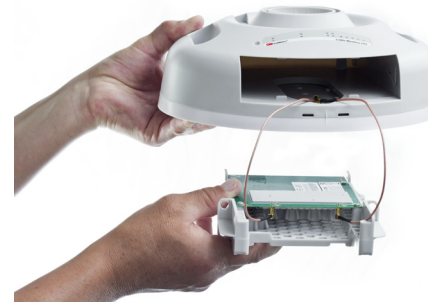
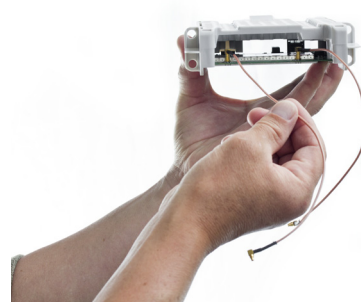
Package Contains:



1 Disassemble the StationBox® XL: Push cover locks and remove the cover. Remove the Chassis using the Chassis Tool. Screwdriver or coin will work too.



2 Integrate the RouterBoard with Chassis: Install LED light guides according to RouterBoard setup. Secure the Routerboard using 4 screws.



3 Connect the RouterBoard with Antenna:
Connect the pigtails between antenna connectors and radio ports.

SBX XL 2.4GHz:
Port B - Horizontal
Port C - Vertical

SBX XL 5GHz:
Port B - Vertical
Port C - Horizontal



4 Insert the Chassis into the StationBox. Insert pigtails first, then slide the Chassis.



5 Use the Security Screw to secure the Chassis (optional).



6 Connect the ethernet cable. In case of more cables, knock off the premolded positions in the Cover.



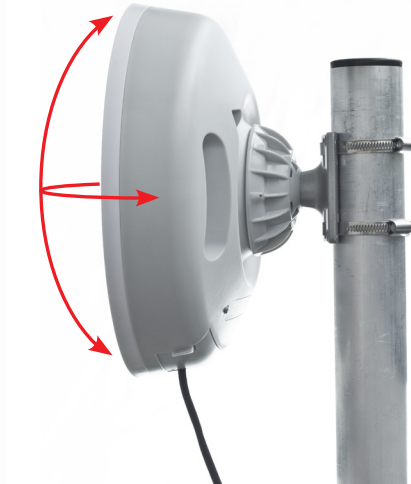
7 Close the Cover. Make sure the side locks lock properly.



8 Install the Bracket on the Pole or on the Wall. Insert the Rubber Brake.



9 Attach the StationBox to the Bracket and slightly tighten the Nut. You should be able to move the StationBox.



10 Now you can smoothly position the antenna in 3-Axis. Set the desired elevation, azimuth and rotation by moving the StationBox using the Ball joint.



11 While holding the StationBox in desired position, tighten the Nut as much as you can. Optional: To secure the position, use Security Screw that cuts in the Ball part of the bracket.