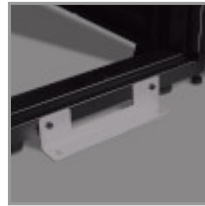
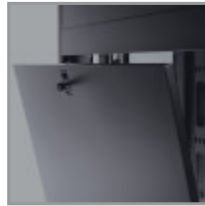


## SmartRack 42U Standard-Depth Rack Enclosure Cabinet with Doors and Side Panels

MODEL NUMBER: SR42UB



Houses, organizes and secures standard-depth 19 in. rack equipment in edge micro data centers and other mission-critical IT applications.

### Features

#### Standard-Depth 42U Server Cabinet Accommodates 19 in. Rack Equipment

This SmartRack® 42U rack enclosure is designed for server rooms, IT closets, micro data centers, edge computing applications and other environments with essential rack-mount IT equipment. Constructed from heavy-duty steel with a durable black powder-coated finish, the SR42UB has a maximum stationary load capacity of 3000 pounds (1363 kilograms) and a maximum rolling load capacity of 2250 pounds (1022 kilograms).

#### Keeps Important Equipment Secure

The reversible front and back doors and removable side panels lock securely with the included keys to help prevent damage, tampering or theft. The doors and side panels are designed for quick release, making it simple to access connected equipment and cabling with little effort. Convenient top access ports and an open bottom allow easy cable routing through the cabinet. The vented doors allow generous airflow from front to rear to keep your equipment cool and functioning at its peak.

#### Easy Enclosure and Equipment Installation

This 42U server rack comes fully assembled for quick and easy deployment with pre-installed (and removable) casters that let you maneuver it over a level surface and through a standard doorway into position, where it can be stabilized by adjusting the levelers (also removable). Front and rear mounting rails accept standard rack equipment up to 37 inches (940 millimeters) deep. Toolless 0U mounting rails allow quick installation of up to four compatible PDUs and vertical cable managers.

#### Designed for Baying Multiple Enclosures in a Row

Built-in baying brackets allow the combination of two or more rack cabinets in a row. Center-to-center width can be set at 24 inches (600 millimeters) to match standard data center floor tiles.

#### Meets Payment Card Industry Standards

The SR42UB provides physical equipment and media security required for PCI DSS (Payment Card Industry Data Security Standard) compliance. This is essential for companies that process, store and/or transmit credit card information.

### Highlights

- 42U rack constructed from powder-coated steel that stands up to tough environments
- Maximum capacity: 3000 lb. (1361 kg) stationary, 2250 lb. (1021 kg) rolling load
- Doors and side panels lock securely to help prevent damage, tampering or theft
- Ships fully assembled for immediate deployment and equipment mounting
- Provides physical equipment and media security required for PCI DSS compliance

### Package Includes

- SR42UB 42U Server Rack
- (4) Side panels
- (4) Side panel locks
- (2) Keys
- (50) M6 screws
- (50) M6 washers
- (50) M6 cage nuts
- Owner's manual

## Specifications

<b>OVERVIEW</b>	
UPC Code	037332123770
Device Compatibility	Patch Panel; Network Switch; UPS; Server
Rack Type	Enclosure
<b>PHYSICAL</b>	
Color	Black
Rack Height	42U
Rack Depth	Standard
Factory Preset Rack Depth (in.)	27.75
Factory Preset Rack Depth (cm)	70.5
Factory Preset Rack Depth (mm)	705
Maximum Device Depth (cm)	93.98
Maximum Device Depth (in.)	37
Maximum Device Depth (mm)	940
Minimum Device Depth (cm)	10.16
Minimum Device Depth (in.)	4
Minimum Device Depth (mm)	102
Shipping Dimensions (hwd / in.)	85.00 x 26.00 x 45.00
Shipping Dimensions (hwd / cm)	215.90 x 66.04 x 114.30
Shipping Weight (lbs.)	336.00
Shipping Weight (kg)	152.41
Unit Dimensions (hwd / in.)	78.500 x 23.630 x 43.000
Unit Dimensions (hwd / cm)	199.39 x 60.02 x 109.22
Unit Weight (lbs.)	281
Unit Weight (kg)	127.46
Weight Capacity - Rolling (kg)	1,021
Weight Capacity - Rolling (lbs.)	2250
Weight Capacity - Stationary (kg)	1,361
Weight Capacity - Stationary (lbs.)	3000
Number of Vertical Mounting Rails	4
<b>FEATURES &amp; SPECIFICATIONS</b>	
Grounding Details	Front and back door frames
Built-in Cable Management	Yes

Extra Wide	No
Locking	No
Pre-Installed Casters	Yes
Outdoor Use	No
<b>STANDARDS &amp; COMPLIANCE</b>	
Product Certifications	UL 60950-1
Product Compliance	CE (Europe); EIA/ECA-310-E; RoHS
<b>WARRANTY &amp; SUPPORT</b>	
Product Warranty Period (Worldwide)	5-year limited warranty