

# Memory Module Specifications

## KSM26RD4/64HAR

64GB 2Rx4 8G x 72-Bit PC4-2666

CL19 Registered w/Parity 288-Pin DIMM

### DESCRIPTION

Kingston's KSM26RD4/64HAR is a 8G x 72-bit (64GB) DDR4-2666 CL19 SDRAM (Synchronous DRAM) registered w/ parity, 2Rx4, ECC, memory module, based on thirty-six 4G x 4-bit FBGA components. The SPD is programmed to JEDEC standard latency DDR4-2666 timing of 19-19-19 at 1.2V. Each 288-pin DIMM uses gold contact fingers. The electrical and mechanical specifications are as follows:

### FEATURES

- Power Supply: VDD = 1.2V
- VDDQ = 1.2V
- VPP = 2.5V
- VDDSPD = 2.41V to 2.75V
- Functionality and operations comply with the DDR4 SDRAM datasheet
- 16 internal banks
- Bank Grouping is applied, and CAS to CAS latency (tCCD\_L, tCCD\_S) for the banks in the same or different bank group accesses are available
- Data transfer rates: PC4-2666, PC4-2400, PC4-2133, PC4-1866, PC4-1600
- Bi-Directional Differential Data Strobe
- 8 bit pre-fetch
- Burst Length (BL) switch on-the-fly BL8 or BC4(Burst Chop)
- Supports ECC error correction and detection
- On-Die Termination (ODT)
- Temperature sensor with integrated SPD
- This product is in compliance with the RoHS directive.
- Per DRAM Addressability is supported
- Internal Vref DQ level generation is available
- Write CRC is supported at all speed grades
- CA parity (Command/Address Parity) mode is supported

### SPECIFICATIONS

CL(IDD)	19 cycles
Row Cycle Time (tRCmin)	46.25ns(min.)
Refresh to Active/Refresh Command Time (tRFCmin)	350ns(min.)
Row Active Time (tRASmin)	32ns(min.)
Maximum Operating Power	*
UL Rating	94 V - 0
Operating Temperature	0° C to +85° C
Storage Temperature	-55° C to +100° C

\*See IDD Specifications (page 2)

### Module Assembly

**DRAM:** HYNIX (A-DIE)

**RCD:** Rambus

Continued >>

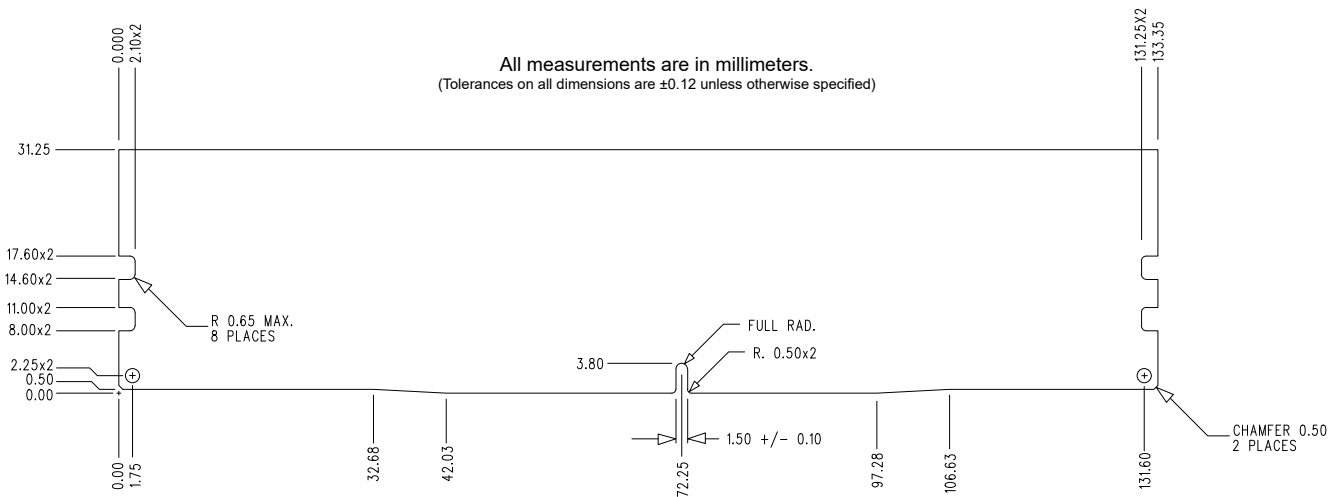
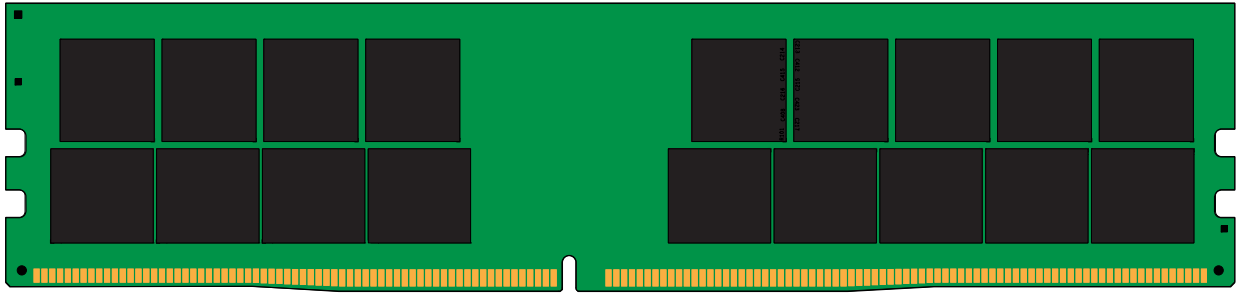
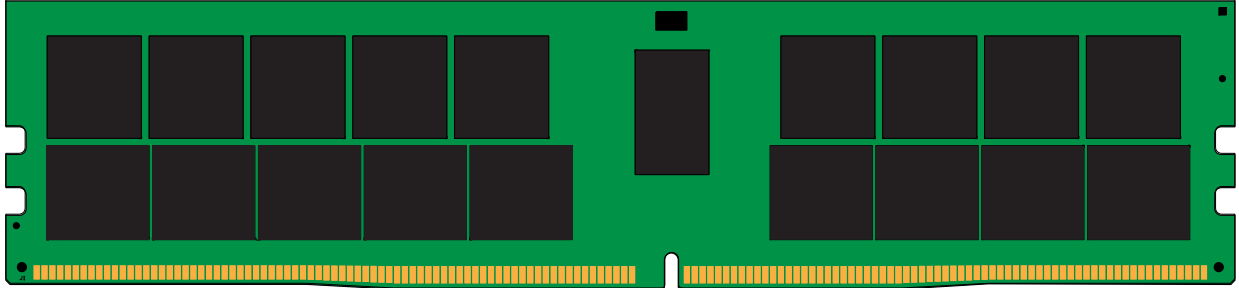
## IDD Specifications

IDD		unit
Symbol	2666	
IDD0	1855	mA
IDD0A	1857	mA
IDD1	2018	mA
IDD1A	2071	mA
IDD2N	1720	mA
IDD2NA	1721	mA
IDD2NT	1881	mA
IDD2NL	1301	mA
IDD2NG	1701	mA
IDD2ND	1670	mA
IDD2NP	1756	mA
IDD2P	1129	mA
IDD2Q	1616	mA
IDD3N	2187	mA
IDD3NA	2189	mA
IDD3P	1634	mA
IDD4R	2984	mA
IDD4RA	3022	mA
IDD4RB	2979	mA
IDD4W	2757	mA
IDD4WA	2838	mA
IDD4WB	2657	mA
IDD4WC	2759	mA
IDD4WP	3299	mA
IDD5B	8152	mA
IDD5F2	5997	mA
IDD5F4	5229	mA
IDD6N	1196	mA
IDD6E	1776	mA
IDD6R	696	mA
IDD6A	1778	mA
IDD7	3843	mA
IDD8	530	mA

IPP		unit
Symbol	2666	
IPP0	62	mA
IPP1	62	mA
IPP2N	48	mA
IPP2P	48	mA
IPP3N	62	mA
IPP3P	62	mA
IPP4R	55	mA
IPP4W	55	mA
IPP5B	1193	mA
IPP5F2	797	mA
IPP5F4	652	mA
IPP6N	150	mA
IPP6E	255	mA
IPP6R	77	mA
IPP6A	217	mA
IPP7	207	mA
IPP8	48	mA

continued

## MODULE DIMENSIONS



The product images shown are for illustration purposes only and may not be an exact representation of the product.  
Kingston reserves the right to change any information at anytime without notice.