

## PERFORMANCE

### Processor

Intel® Core™ i5-L16G7 (5C / 5T, 1.4 / 3.0GHz, 4MB)

### Graphics

Integrated Intel UHD Graphics

### Chipset

Intel SoC Platform

### Memory

8GB Soldered LPDDR4x-4266, POP Memory

### Memory Slots

Memory soldered to systemboard, no slots, dual-channel capable

### Max Memory

8GB soldered memory, not upgradable

### Storage

512GB SSD M.2 2242 PCIe 3.0x4 NVMe

### Storage Support

One drive, up to 1TB M.2 2242 SSD

### Card Reader

No card reader

### Optical

None

### Audio Chip

High Definition (HD) Audio, Realtek® ALC3306 codec

### Speakers

Stereo speakers, 1W x2, Dolby® Atmos®

### Camera

5.0MP + IR

### Microphone

4x, Array

### Battery

Integrated 50Wh

### Max Battery Life

MobileMark® 2018: 8.5 hr

Video Playback: 10.6 hr

### Power Adapter

65W USB-C Slim

## DESIGN

### Display

13.3" QXGA (2048x1536) OLED 300nits, Foldable

### Touchscreen

10-point Multi-touch

### Keyboard

Lenovo® Fold Mini Keyboard, English (UK)

### Case Color

Black

### Case Material

Magnesium Alloy + Authentic Leather

### Pen

Lenovo Mod Pen

### Dimensions (WxDxH)

Folded: 158 x 235.6 x 27.8 mm (6.22 x 9.28 x 1.09 inches)

Unfolded: 299 x 235.6 x 11.3 mm (11.77 x 9.28 x 0.44 inches)

### Weight

0.999 kg (2.2 lbs)

## SOFTWARE

### Operating System

Windows® 10 Pro 64, Czech / Slovak / English

### Bundled Software

None

## CONNECTIVITY

### Ethernet

100/1000M via Optional Adapter

### WLAN + Bluetooth™

Intel AX200 11ax, 2x2 + BT5.2

### WWAN

Qualcomm® Snapdragon™ X55 5G Modem-RF System with embedded eSIM

### SIM Card

None

### NFC

None

### Standard Ports

2x USB-C 3.2 Gen 2 (support data transfer, Power Delivery and DisplayPort™ 1.2)

### Optional Ports (configured)

1x Nano-SIM card slot (WWAN models)

### Monitor Cable

None

## SECURITY & PRIVACY

### Smart Card Reader

None

### Security Chip

Discrete TPM 2.0

### Fingerprint Reader

None

## MANAGEABILITY

### System Management

None

## SERVICE

### Base Warranty

3-year, Depot

### Included Upgrade

3Y Premier Support with Depot/CCI upgrade from 3Y Depot/CCI (5WS1A40292)

## ACCESSORIES

### Bundled Accessories

None

## CERTIFICATIONS

### Green Certifications

- EPEAT™ Gold
- ENERGY STAR® 8.0
- TCO
- RoHS compliant

### Other Certifications

Athena certified

### Mil-Spec Test

MIL-STD-810H military test passed

## MODEL

TopSeller : Yes

Announce Date : 2020-10-27

EAN / UPC / JAN : 0195477104389

End of Support : 2027-04-01



## Premier Support - A direct 24x7x365 line to our most elite technicians.



Advanced technical support, 24x7x365, in more than 100 markets



Technical Account Managers for proactive relationship and escalation management



Comprehensive hardware & OEM software support



Priority on service delivery and repair parts



Single point of contact for simplified end-to-end case management



Lenovo Service Connect Portal for customized reporting and product support

## Accidental Damage Protection - Protection of your PC from the unexpected.

Experience shows that a significant portion of devices may be damaged (and not covered under warranty) in the first three years. Lenovo's Accidental Damage Protection service covers accidents beyond the system warranty such as drops, spills, bumps and even electrical surges. Make sure your new device has maximum protection, avoid unplanned costs and get peace of mind.

## Base Warranty - Included with the systems you purchase, default 1- or 3-year coverage window.

## Warranty Extensions & Upgrades - Service and protection that's right for your circumstances.

- Pick Up & Return Courier
- Onsite Support
- Technician Installed Customer
- Replaceable Unit Service
- International Warranty Upgrade

Lenovo may not offer the products, services or features discussed in this document in all regions. Lenovo may withdraw an offering at any time. Information is subject to change without notice. Consult your local representative for information on offerings available in your area. Lenovo reserves the right to change specifications or other product information without notice. Lenovo is not responsible for photographic or typographical errors. Lenovo provides this publication "as is" without warranty of any kind, either express or implied, including the implied warranties of merchantability or fitness for a particular purpose.

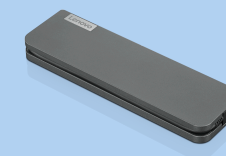
## Recommended Accessories



### Lenovo 65W Standard AC Adapter (USB Type-C)- US/Can/Mex

4X20M26268

This Lenovo 65W Standard AC Adapter (USB Type-C) Power Adapter offers fast, efficient charging at home, in the office, or on the go. This power adapter is compatible with ThinkPad USB-C enabled Notebook and Tablet.



### Lenovo USB-C Mini Dock\_US

40AU0065US

Expand Your Potential with An Universal Mini Dock; Lenovo understands that modern business depends on a wide variety of PC's and even brands to meet their business needs. To make this easier Lenovo USB-C Mini dock is ...

For a full list of accessories and services, please visit:  
<https://smartfind.Lenovo.com>

**Lenovo**

**PSREF**  
Product Specifications  
Reference