

PERFORMANCE

Processor

Intel® Core™ i5-11400H (6C / 12T, 2.7 / 4.5GHz, 12MB)

Graphics

NVIDIA® T600 4GB GDDR6

Chipset

Intel WM590

Memory

1x 16GB SO-DIMM DDR4-3200 Non-ECC

Memory Slots

Two DDR4 SO-DIMM slots, dual-channel capable

Max Memory

Up to 64GB DDR4-3200

Storage

512GB SSD M.2 2280 PCIe® x4 NVMe® Opal2

Storage Support

Up to two drives, 2x M.2 SSD
• M.2 2280 SSD up to 2TB

Card Reader

SD Reader

Audio Chip

High Definition (HD) Audio, Realtek® ALC3287 codec

Speakers

Stereo speakers, 2W x2, Dolby® Audio™

Camera

IR & 720p with Privacy Shutter

Microphone

2x, Array

Battery

Integrated 68Wh

Max Battery Life

MobileMark® 2018: 7.5 hr
JEITA 2.0: 9.5 hr

Power Adapter

135W Slim Tip (3-pin)

DESIGN

Display

15.6" FHD (1920x1080) IPS 300nits Anti-glare, 45% NTSC

Color Calibrator

No color calibration

Keyboard

Backlit, Czech / Slovak

Case Color

Black

Case Material

PC + ABS (Top), PC + ABS (Bottom)

Dimensions (WxDxH)

366.5 x 250 x 22.7 mm (14.43 x 9.84 x 0.89 inches)

Weight

2.07 kg (4.56 lbs)

SOFTWARE

Operating System

Windows® 10 Pro 64, Czech / Slovak / English

CONNECTIVITY

Ethernet

GbE

WLAN + Bluetooth®

Intel AX201 11ax, 2x2 + BT5.2

WWAN

WWAN Upgradable to 4G

Standard Ports

- 2x USB 3.2 Gen 1 (one Always On)
- 1x Thunderbolt™ 4 / USB 4 40Gbps (support data transfer, Power Delivery 3.0, and DisplayPort™ 1.4)
- 1x HDMI® 2.0
- 1x SD card reader
- 1x Ethernet (RJ-45)
- 1x Headphone / microphone combo jack (3.5mm)

Optional Ports (configured)

- 1x Smart card reader
- 1x Nano-SIM card slot (WWAN support models)

Docking

Various docking solutions supported via Thunderbolt or USB-C.

For more compatible docking solutions, please visit [Docking for ThinkPad® P15v Gen 2](#)

SECURITY & PRIVACY

Smart Card Reader

Smart Card Reader

Security Chip

Discrete TPM 2.0

Fingerprint Reader

Touch Style, Match-on-Chip

Physical Locks

Kensington® Security Slot, 3 x 7 mm

Other Security

- IR camera for Windows® Hello
- Camera privacy shutter

MANAGEABILITY

System Management

Non-vPro

SERVICE

Base Warranty

3-year, Depot

Included Upgrade

3Y Premier TP WS WHB (CPN) (5WS1B09494)

CERTIFICATIONS

Green Certifications

- EPEAT™ Gold
- ENERGY STAR® 8.0
- RoHS compliant

Mil-Spec Test

MIL-STD-810H military test passed

ISV Certifications

Please visit www.thinkworkstations.com/isv-certifications/

MODEL

TopSeller	: Yes	Announce Date	: 2021-07-20
EAN / UPC / JAN	: 0195891538593	End of Support	: 2028-02-20



- Lenovo reserves the right to change specifications or other product information without notice.
- Product image on this page is a sample, it may not match the real color of this model
- Battery life is an estimated maximum. Actual battery life may vary based on many factors, including screen brightness, active applications, features, power management settings, battery age and conditioning, and other customer preferences

Premier Support - A direct 24x7x365 line to our most elite technicians.



Advanced technical support, 24x7x365, in more than 100 markets



Technical Account Managers for proactive relationship and escalation management



Comprehensive hardware & OEM software support



Priority on service delivery and repair parts



Single point of contact for simplified end-to-end case management



Lenovo Service Connect Portal for customized reporting and product support

Accidental Damage Protection - Protection of your PC from the unexpected.

Experience shows that a significant portion of devices may be damaged (and not covered under warranty) in the first three years. Lenovo's Accidental Damage Protection service covers accidents beyond the system warranty such as drops, spills, bumps and even electrical surges. Make sure your new device has maximum protection, avoid unplanned costs and get peace of mind.

Base Warranty - Included with the systems you purchase, default 1- or 3-year coverage window.

Warranty Extensions & Upgrades - Service and protection that's right for your circumstances.

- Pick Up & Return Courier
- Onsite Support
- Technician Installed Customer
- Replaceable Unit Service
- International Warranty Upgrade

Lenovo may not offer the products, services or features discussed in this document in all regions. Lenovo may withdraw an offering at any time. Information is subject to change without notice. Consult your local representative for information on offerings available in your area. Lenovo reserves the right to change specifications or other product information without notice. Lenovo is not responsible for photographic or typographical errors. Lenovo provides this publication "as is" without warranty of any kind, either express or implied, including the implied warranties of merchantability or fitness for a particular purpose.

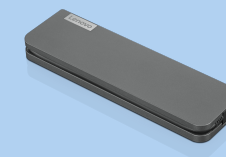
Recommended Accessories



ThinkPad USB-C Dock Gen 2

40AS0090US

- Lenovo understands that modern business depends on a wide variety of PC's and even brands to meet their business needs. To make this easier Lenovo USB-C dock is compatible with Lenovo notebooks as well as note...



Lenovo USB-C Mini Dock_US

40AU0065US

Expand Your Potential with An Universal Mini Dock; Lenovo understands that modern business depends on a wide variety of PC's and even brands to meet their business needs. To make this easier Lenovo USB-C Mini dock is ...

For a full list of accessories and services, please visit:
<https://smartfind.Lenovo.com>

Lenovo

PSREF
Product Specifications
Reference