

PERFORMANCE

Processor

AMD Ryzen™ 9 PRO 7940HS (8C / 16T, 4.0 / 5.2GHz, 8MB L2 / 16MB L3)

Graphics

NVIDIA® RTX 2000 Ada Generation 8GB GDDR6

Chipset

AMD SoC Platform

Memory

1x 32GB SO-DIMM DDR5-5600 Non-ECC

Memory Slots

Two DDR5 SO-DIMM slots, dual-channel capable

Max Memory

Up to 64GB (2x 32GB DDR5 SO-DIMM)

Storage

1TB SSD M.2 2280 PCIe® 4.0x4 Performance NVMe® Opal 2.0

Storage Support^[1]

Up to two drives, 2x M.2 SSD

- M.2 2280 SSD up to 4TB, 2TB each

Storage Slot

Two M.2 2280 PCIe 4.0 x4 slots

Card Reader

SD 7.0 Card Reader

Audio Chip

High Definition (HD) Audio, Realtek® ALC3287 codec

Speakers

Stereo speakers, 2W x2, Dolby® Audio™

Camera

5.0MP + IR Hybrid with Privacy Shutter and Human Presence Detection

Microphone

2x, Array

Battery

Integrated 90Wh

Power Adapter

170W Slim Tip (3-pin)

DESIGN

Display^[2]

16" WQXGA (3840x2400) IPS 800nits Anti-glare, 100% DCI-P3, DisplayHDR™ 400, Dolby Vision™, Eyesafe®

Color Calibration

Factory Color Calibration

Keyboard

Backlit, Czech / Slovak

Case Color

Thunder Black

Case Material

PC-ABS (Top), PC-ABS (Bottom)

Pen

No Support

Dimensions (WxDxH)^[3]

365 x 262 x 24.66 mm (14.37 x 10.31 x 0.97 inches)

Weight^[4]

Starting at 2.2 kg (4.85 lbs)

SOFTWARE

Operating System

Windows® 11 Pro, Czech / Slovak / English

CONNECTIVITY

Ethernet

No Onboard Ethernet

WLAN + Bluetooth^[5]

Qualcomm® Wi-Fi® 6E NFA725A, 11ax 2x2 + BT5.3

WWAN

WWAN Upgradable to 4G

Standard Ports^[6]

- 1x HDMI® 2.1, up to 8K/60Hz
- 1x Headphone / microphone combo jack (3.5mm)
- 1x SD Express 7.0 card reader
- 1x Security keyhole
- 2x USB 3.2 Gen 1 (one Always On)
- 2x USB4® 40Gbps (support data transfer, Power Delivery 3.0 and DisplayPort™ 1.4)

Optional Ports (configured)

1x Nano-SIM Card Slot

Docking

Various docking solutions supported via Thunderbolt™ or USB-C®.

For more compatible docking solutions, please visit .

[Docking for ThinkPad® P16v Gen 1 \(AMD\)](#)

SECURITY & PRIVACY

Security Chip

Microsoft® Pluton TPM 2.0 Enabled

Fingerprint Reader

Touch Style, Match-on-Chip, Integrated in Power Button

Physical Locks

Kensington® Nano Security Slot™, 2.5 x 6 mm

Other Security

- Ultrasonic Human Presence Detection for IR camera
- Camera privacy shutter
- Bottom cover tamper detection
- IR camera for Windows® Hello

MANAGEABILITY

System Management

AMD PRO Manageability 2.0

SERVICE

Base Warranty

3-year, Courier or Carry-in

Included Upgrade

CO2 Offset 0.5 ton, 3Y Premier Support Upgrade from 3Y Courier/Carry-In WHB(CPN)

CERTIFICATIONS

Green Certifications^[7]

- ENERGY STAR® 8.0
- EPEAT™ Gold Registered
- RoHS compliant
- TCO Certified 9.0

Other Certifications

- Eyesafe® Certified
- TÜV Rheinland® Low Blue Light

Mil-Spec Test

MIL-STD-810H military test passed

ISV Certifications

Please visit [ISV certifications for Lenovo® Workstations](#)

MODEL

TopSeller : Yes **Announce Date** : 2023-08-22

EAN / UPC / JAN : 0197528111346 **End of Support** : 2030-02-25

Note:

^[1] The storage capacity supported is based on the test results with current Lenovo storage offerings.

^[2] IPS (in-plane switching) technology may refer to IPS, PLS, ADS, AHVA, AAS.

^[3] The system dimensions may vary depending on configurations.

^[4] The system weight is approximate and based on results in Lenovo lab, which varies depending on the source of component, variance of the distribution of each component, and manufacturing process. It may not be the exact weight for each specific model.

^[5] Wi-Fi 6E full features might be limited by country-level.....

· Lenovo reserves the right to change specifications without notice.

To see more note information, please link to

<https://psref.lenovo.com/Detail/2342?M=21FE000VCK>

Premier Support - A direct 24x7x365 line to our most elite technicians.



Advanced technical support, 24x7x365, in more than 100 markets



Technical Account Managers for proactive relationship and escalation management



Comprehensive hardware & OEM software support



Priority on service delivery and repair parts



Single point of contact for simplified end-to-end case management



Lenovo Service Connect Portal for customized reporting and product support

Accidental Damage Protection - Protection of your PC from the unexpected.

Experience shows that a significant portion of devices may be damaged (and not covered under warranty) in the first three years. Lenovo's Accidental Damage Protection service covers accidents beyond the system warranty such as drops, spills, bumps and even electrical surges. Make sure your new device has maximum protection, avoid unplanned costs and get peace of mind.

Base Warranty - Included with the systems you purchase, default 1- or 3-year coverage window.

Warranty Extensions & Upgrades - Service and protection that's right for your circumstances.

- Pick Up & Return Courier
- Onsite Support
- Technician Installed Customer
- Replaceable Unit Service
- International Warranty Upgrade

Lenovo may not offer the products, services or features discussed in this document in all regions. Lenovo may withdraw an offering at any time. Information is subject to change without notice. Consult your local representative for information on offerings available in your area. Lenovo reserves the right to change specifications or other product information without notice. Lenovo is not responsible for photographic or typographical errors. Lenovo provides this publication "as is" without warranty of any kind, either express or implied, including the implied warranties of merchantability or fitness for a particular purpose.

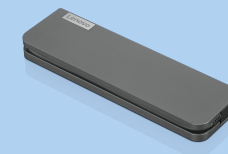
Recommended Accessories



ThinkPad Hybrid USB-C with USB-A Dock (American Standard Plug Type B)

40AF0135US

The ThinkPad Hybrid USB-C with USB-A Dock expands the capabilities of most any laptop, new or old, making it perfect for enterprise customers with mixed-PC or shared-desk environments. Featuring enterprise-class manag...



Lenovo USB-C Mini Dock_US

40AU0065US

Expand Your Potential with An Universal Mini Dock; Lenovo understands that modern business depends on a wide variety of PC's and even brands to meet their business needs. To make this easier Lenovo USB-C Mini dock is ...

For a full list of accessories and services, please visit:
<https://smartfind.Lenovo.com>

Lenovo

PSREF
Product Specifications
Reference