

## PERFORMANCE

### Processor

AMD Ryzen™ 3 7335U (4C / 8T, 3.0 / 4.3GHz, 2MB L2 / 8MB L3)

### Graphics

Integrated AMD Radeon™ 660M Graphics

### Chipset

AMD SoC Platform

### Memory

1x 8GB SO-DIMM DDR5-4800

### Memory Slots

Two DDR5 SO-DIMM slots, dual-channel capable

### Max Memory<sup>[1]</sup>

Up to 64GB DDR5-4800

### Storage

512GB SSD M.2 2242 PCIe® 4.0x4 NVMe® Opal 2.0

### Storage Support<sup>[2]</sup>

Up to two drives, 2x M.2 SSD

- M.2 2242 SSD up to 1TB
- M.2 2280 SSD up to 1TB

### Storage Slot

Two M.2 slots

- One M.2 2242 PCIe® 4.0 x4 slot
- One M.2 2280 PCIe® 4.0 x4 slot

### Card Reader

No card reader

### Optical

None

### Audio Chip

High Definition (HD) Audio, Senary SN6141 codec

### Speakers

Stereo speakers, 2W x2, Dolby Atmos®, audio by HARMAN

### Camera

FHD 1080p + IR Hybrid with Privacy Shutter

### Microphone

2x, Array

### Battery

Integrated 57Wh

### Power Adapter

65W USB-C® (3-pin)

## DESIGN

### Display<sup>[3]</sup>

14" WUXGA (1920x1200) IPS 300nits Anti-glare, 45% NTSC

### Touchscreen

None

### Keyboard

Backlit, Czech / Slovak

### Case Color

Black

### Case Material

Aluminium (Top), Aluminium (Bottom)

### Dimensions (WxDxH)<sup>[4]</sup>

313 x 219.3 x 17.99 mm (12.32 x 8.63 x 0.71 inches)

### Weight<sup>[5]</sup>

Starting at 1.44 kg (3.17 lbs)

## SOFTWARE

### Operating System

Windows® 11 Pro, Czech / Slovak / English

### Bundled Software

None

## CONNECTIVITY

### Ethernet

100/1000M (RJ-45)

### WLAN + Bluetooth<sup>[6]</sup>

Wi-Fi® 6E, 802.11ax 2x2 + BT5.3

### WWAN

None

### SIM Card

None

### NFC

None

### Standard Ports

- 1x USB-A (USB 5Gbps / USB 3.2 Gen 1)
- 1x USB-A (USB 10Gbps / USB 3.2 Gen 2), Always On
- 1x USB-C® (USB 5Gbps / USB 3.2 Gen 1), with USB PD 3.0 and DisplayPort™ 1.4
- 1x USB-C® (USB 10Gbps / USB 3.2 Gen 2), with USB PD 3.0 and DisplayPort™ 1.4
- 1x HDMI® 2.1, up to 4K/60Hz
- 1x Headphone / microphone combo jack (3.5mm)
- 1x Ethernet (RJ-45)

### Docking

Various docking solutions supported via USB-C®.

For more compatible docking solutions, please visit [Docking for ThinkPad® E14 Gen 6 \(AMD\)](#)

## SECURITY & PRIVACY

### Smart Card Reader

None

### Security Chip

Discrete TPM 2.0 Enabled

### Fingerprint Reader

Touch Style, Match-on-Chip, Integrated in Power Button

### Physical Locks

Kensington® Nano Security Slot™, 2.5 x 6 mm

### Other Security

- IR camera for Windows® Hello (facial recognition)
- Camera privacy shutter

## MANAGEABILITY

### System Management

Non-DASH

## SERVICE

### Base Warranty

1-year, Courier or Carry-in

### Included Upgrade

1Y Premier WHB (CPN), 3Y Onsite upgrade from 1Y Courier/Carry-in Windchill (CPN), CO2 Offset 0.5 ton (2nd Gen) TP WHB (CPN)

## ACCESSORIES

### Bundled Accessories

None

## CERTIFICATIONS

### Green Certifications<sup>[7]</sup>

- ENERGY STAR® 8.0
- EPEAT™ Gold Registered
- ErP Lot 6
- ErP Lot 26
- RoHS compliant
- TCO Certified 9.0

### Other Certifications

TÜV Rheinland® Low Blue Light (Software Solution)

### Mil-Spec Test

MIL-STD-810H military test passed

## MODEL

TopSeller : Yes

Announce Date : 2024-04-29

EAN / UPC / JAN : 0198154006297

End of Support : 2030-11-02

· Lenovo reserves the right to change specifications without notice.

To see more note information, please link to <https://psref.lenovo.com/Detail/2469?M=21M3003VCK>

## Premier Support - A direct 24x7x365 line to our most elite technicians.



Advanced technical support, 24x7x365, in more than 100 markets



Technical Account Managers for proactive relationship and escalation management



Comprehensive hardware & OEM software support



Priority on service delivery and repair parts



Single point of contact for simplified end-to-end case management



Lenovo Service Connect Portal for customized reporting and product support

## Accidental Damage Protection - Protection of your PC from the unexpected.

Experience shows that a significant portion of devices may be damaged (and not covered under warranty) in the first three years. Lenovo's Accidental Damage Protection service covers accidents beyond the system warranty such as drops, spills, bumps and even electrical surges. Make sure your new device has maximum protection, avoid unplanned costs and get peace of mind.

## Base Warranty - Included with the systems you purchase, default 1- or 3-year coverage window.

## Warranty Extensions & Upgrades - Service and protection that's right for your circumstances.

- Pick Up & Return Courier
- Onsite Support
- Technician Installed Customer
- Replaceable Unit Service
- International Warranty Upgrade

Lenovo may not offer the products, services or features discussed in this document in all regions. Lenovo may withdraw an offering at any time. Information is subject to change without notice. Consult your local representative for information on offerings available in your area. Lenovo reserves the right to change specifications or other product information without notice. Lenovo is not responsible for photographic or typographical errors. Lenovo provides this publication "as is" without warranty of any kind, either express or implied, including the implied warranties of merchantability or fitness for a particular purpose.

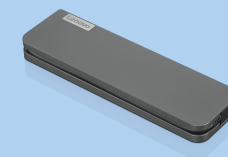
## Recommended Accessories



### ThinkPad Hybrid USB-C with USB-A Dock (American Standard Plug Type B)

40AF0135US

- The ThinkPad Hybrid USB-C with USB-A dock is a productivity solution for any USB-C or USB-A laptop, including non-Lenovo laptops from Dell, HP, and Apple, providing power, display, and port expansion in any m...



### Lenovo USB-C Mini Dock\_US

40AU0065US

Expand Your Potential with An Universal Mini Dock; Lenovo understands that modern business depends on a wide variety of PC's and even brands to meet their business needs. To make this easier Lenovo USB-C Mini dock is ...

For a full list of accessories and services, please visit:  
<https://smartfind.Lenovo.com>

**Lenovo**

**PSREF**  
Product Specifications  
Reference