

# Lenovo Legion 5 15IMH05H 81Y600HPCK

**Product**

Lenovo Legion 5 15IMH05H

**Region**

EET

**Country/Region**

Czech, Slovakia

**Machine Type**

81Y6

**Processor**

Intel Core i5-10300H (4C / 8T, 2.5 / 4.5GHz, 8MB)

**Graphics**

NVIDIA GeForce RTX 2060 6GB GDDR6

**Chipset**

Intel HM470

**Memory**

2x 8GB SO-DIMM DDR4-2933

**Storage**

512GB SSD M.2 2280 PCIe NVMe

**Display**

15.6" FHD (1920x1080) IPS 500nits Anti-glare, 240Hz, 100% sRGB, Dolby Vision

**Touchscreen**

None

**Optical**

None

**Media Reader**

None

**Ethernet**

100/1000M

**WLAN + Bluetooth**

11ax, 2x2 + BT5.0

**Bundled Accessories**

None

**Case Material**

PC / ABS

**Camera**

720p

**Microphone**

2x, Array

**Surface Treatment**

Painting

**Color**

Phantom Black

**Keyboard**

4-Zone RGB LED backlight, Czech / Slovak

**Fingerprint Reader**

None

**TPM**

FW TPM 2.0

**Battery**

Integrated 80Wh

**Power Adapter**

230W Slim Tip

**Operating System**

None

**Bundled Software**

None

**Base Warranty**

2-year, Depot

**Bundled Service**

None

**EAN / UPC / JAN**

195235848029

**End of Support**

2026-05-27

**Announce Date**

2020-07-14

 [WWW.LENOVO.COM](http://WWW.LENOVO.COM)

Lenovo may not offer the products, services or features discussed in this document in other countries. Lenovo may withdraw an offering at any time. Information is subject to change without notice. Consult your local representative for information on offerings available in your area.

Lenovo reserves the right to change specifications or other product information without notice. Lenovo is not responsible for photographic or typographical errors.

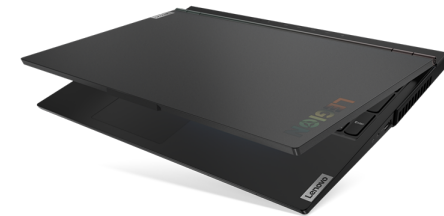
Lenovo provides this publication "as is" without warranty of any kind, either express or implied, including the implied warranties of merchantability or fitness for a particular purpose.



<https://psref.lenovo.com>

Visit psref website for the latest version of Product specifications Reference.

© Lenovo, 2020. All rights reserved.



Lenovo™

# Lenovo Legion 5 15IMH05H Platform Specifications

Product Specifications Reference (PSREF)



Processor	10th Generation Intel® Core™ i5 / i7 Processor								Media reader Ports None Four USB 3.2 Gen 1 (one Always On), one USB 3.2 Type-C Gen 1 (with the function of DisplayPort 1.2), HDMI 2.0, Ethernet (RJ-45), headphone / microphone combo jack, security keyhole, AC power adapter jack <i>* Depending on many factors, actual data transfer speed may be lower than theoretical speed</i> Optional: Lenovo Legion M300 RGB Gaming Mouse (USB connector)
	Processor Number	# of Cores	# of Threads	Base Frequency	Max Turbo Frequency	Cache	Memory Types	Processor Graphics	
	i5-10300H	4	8	2.5 GHz	4.5 GHz	8MB	DDR4-2933	Intel UHD Graphics	
	i7-10750H	6	12	2.6 GHz	5.0 GHz	12MB			
i7-10875H	8	16	2.3 GHz	5.1 GHz	16MB				
Graphics	Integrated Graphics		Discrete Graphics (Memory)						Camera 720p HD, 1.0MP resolution, privacy shutter, fixed focus, integrated dual array microphone
	Intel UHD Graphics		NVIDIA® GeForce® GTX 1660 Ti (6GB GDDR6 memory), VR ready NVIDIA GeForce RTX 2060 (6GB GDDR6 memory), VR ready						
Audio support HD Audio, Realtek ALC3287 codec / Dolby Atmos® for Gaming Certification, Harman speakers, 2W x 2, dual array microphone, headphone / microphone combo jack									
Keyboard 6-row, multimedia Fn keys, white backlight or 4-Zone RGB LED backlight, numeric keypad, anti-ghost									
Touchpad Buttonless Mylar surface multi-touch touchpad									
Security Power-on password, hard-disk password, supervisor password, security keyhole									
Security chip Firmware TPM 2.0 integrated in chipset									
Fingerprint reader None									
Battery Integrated Li-Polymer 60Wh or 80Wh battery, supports Rapid Charge Pro (30 minutes 50%)									
Max battery life <i>MobileMark® 2018: 7.7 hr (80Wh) or 6.8 hr (60Wh)</i> <i>* Battery life varies significantly with hardware configurations, settings, usage, &amp; other factors</i>									
AC adapter 230W slim tip AC adapter									
Preload (optional) Preloaded operating system									
<ul style="list-style-type: none"> <li>Windows® 10 Home 64</li> <li>Windows 10 Pro 64</li> </ul> Preloaded applications (only some listed)									
<ul style="list-style-type: none"> <li>Microsoft Office Trial (with 30-day license)</li> <li>Microsoft Office Home and Business 2019</li> <li>Microsoft Office Home and Student 2019</li> <li>Microsoft 365 Family</li> <li>Microsoft 365 Personal</li> <li>Microsoft Office Professional 2019</li> <li>Microsoft Office Personal 2019</li> </ul>									
Limited warranty <i>One of the following, configurable by model:</i> <ul style="list-style-type: none"> <li>1-year depot repair service</li> <li>1-year depot repair with 2-year system board repair service</li> <li>2-year/1-yr battery depot repair service</li> </ul>									
Environment ErP lot3; RoHS-compliant									
Chipset	Intel HM470 Chipset								
Memory	32GB max offering / 2933MHz DDR4, dual-channel capable, two DDR4 SO-DIMM sockets								
Display	One of the following, configurable by model: <ul style="list-style-type: none"> <li>15.6" (396mm) FHD (1920x1080), anti-glare, LED backlight, WVA, 250 nits, 16:9 aspect ratio, 45% NTSC gamut, refresh rate 120Hz</li> <li>15.6" (396mm) FHD (1920x1080), anti-glare, LED backlight, WVA, 300 nits, 16:9 aspect ratio, 100% sRGB gamut, refresh rate 60Hz</li> <li>15.6" (396mm) FHD (1920x1080), anti-glare, LED backlight, WVA, 300 nits, 16:9 aspect ratio, 100% sRGB gamut, refresh rate 144Hz, Dolby® Vision</li> <li>15.6" (396mm) FHD (1920x1080), anti-glare, LED backlight, WVA, 500 nits, 16:9 aspect ratio, 100% sRGB gamut, refresh rate 240Hz, Dolby Vision</li> </ul>								
Multi-touch	None								
Storage	Up to 2 drives: <ul style="list-style-type: none"> <li>HDD / SATA 6.0Gb/s, 2.5" wide, 7mm high</li> <li>M.2 2280 SSD / PCIe NVMe, PCIe 3.0 x 4</li> <li>M.2 2242 SSD / PCIe NVMe, PCIe 3.0 x 4</li> </ul>								
Optical	None								
Ethernet	Gigabit Ethernet connection								
WLAN	802.11ax 2x2 Wi-Fi + Bluetooth 5.0, M.2 Card								
Bluetooth™	Bluetooth 5.0 wireless, integrated in Wi-Fi + Bluetooth combo adapter								
Dimensions	WxDxH: 14.3" x 10.22" x 0.93-1.03"; 363.06mm x 259.61mm x 23.57-26.1mm								
Weight	Starting at 5.42 lb / 2.46 kg								
Case color	Phantom black								
Case material	PC/ABS plastic								

Note: The specifications above may not be available in all regions.

Lenovo  
July 2020

# Lenovo Legion 5 15IMH05H

