

# Lenovo Legion 5P 15IMH05H 82AW002ACK

**Product**

Lenovo Legion 5P 15IMH05H

**Region**

EET

**Country/Region**

Czech, Slovakia

**Machine Type**

82AW

**Processor**

Intel Core i5-10300H (4C / 8T, 2.5 / 4.5GHz, 8MB)

**Graphics**

NVIDIA GeForce RTX 2060 6GB GDDR6

**Chipset**

Intel HM470

**Memory**

2x 8GB SO-DIMM DDR4-2933

**Storage**

1TB SSD M.2 2280 PCIe NVMe

**Display**

15.6" FHD (1920x1080) IPS 300nits Anti-glare, 144Hz

**Touchscreen**

None

**Optical**

None

**Media Reader**

None

**Ethernet**

100/1000M

**WLAN + Bluetooth**

11ax, 2x2 + BT5.0

**Bundled Accessories**

None

**Case Material**

PC / ABS

**Camera**

None

**Microphone**

2x, Array

**Color**

Iron Grey

**Keyboard**

Backlit, Czech / Slovak

**Fingerprint Reader**

None

**TPM**

FW TPM 2.0

**Battery**

Integrated 60Wh

**Power Adapter**

230W Slim Tip

**Operating System**

Windows 10 Home 64, English / Czech / Slovak

**Bundled Software**

Office Trial

**Base Warranty**

2-year, Depot

**Bundled Service**

None

**EAN / UPC / JAN**

195042226171

**End of Support**

2026-05-15

**Announce Date**

2020-04-15

 [WWW.LENОВО.COM](http://WWW.LENОВО.COM)

Lenovo may not offer the products, services or features discussed in this document in other countries. Lenovo may withdraw an offering at any time. Information is subject to change without notice. Consult your local representative for information on offerings available in your area.

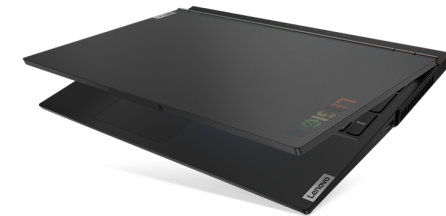
Lenovo reserves the right to change specifications or other product information without notice. Lenovo is not responsible for photographic or typographical errors. Lenovo provides this publication "as is" without warranty of any kind, either express or implied, including the implied warranties of merchantability or fitness for a particular purpose.



<https://psref.lenovo.com>

Visit psref website for the latest version of Product Specifications Reference.

© Lenovo, 2020. All rights reserved.



Lenovo™

# Lenovo Legion 5P 15IMH05H Platform Specifications

Product Specifications Reference (PSREF)



|   |   |            |   |                |                     |       |              |                    |                      |  |
|---|---|------------|---|----------------|---------------------|-------|--------------|--------------------|----------------------|--|
| Processor   | 10th Generation Intel® Core™ i5 / i7 Processor  |            |   |                |                     |       |              |                    | Media reader Ports   | None<br>Four USB 3.1 Gen 1 (one Always On), one USB 3.1 Type-C Gen 1 (with the function of DisplayPort 1.2), HDMI 2.0, Ethernet (RJ-45), headphone / microphone combo jack, security keyhole, AC power adapter jack<br><i>* Depending on many factors, actual data transfer speed may be lower than theoretical speed</i><br>Optional: Lenovo Legion M300 RGB Gaming Mouse (USB connector) |
|   | Processor Number  | # of Cores | # of Threads  | Base Frequency | Max Turbo Frequency | Cache | Memory Types | Processor Graphics |                      |  |
|   | i5-10300H   | 4          | 8   | 2.5 GHz        | 4.5 GHz             | 8MB   | DDR4-2933    | Intel UHD Graphics |                      |  |
|   | i7-10750H   | 6          | 12  | 2.6 GHz        | 5.0 GHz             | 12MB  |              |                    |                      |  |
| i7-10875H   | 8   | 16         | 2.3 GHz   | 5.1 GHz        | 16MB                |       |              |                    |                      |  |
| Graphics  | Integrated Graphics   |            | Discrete Graphics (Memory)  |                |                     |       |              |                    | Camera Audio support | None<br>HD Audio, Realtek ALC3287 codec / Dolby Atmos® for Gaming Certification, Harman speakers, 2W x 2, dual array microphone, headphone / microphone combo jack   |
|   | Intel UHD Graphics  |            | NVIDIA® GeForce® GTX 1660 Ti (6GB GDDR6 memory), VR ready<br>NVIDIA GeForce RTX 2060 (6GB GDDR6 memory), VR ready |                |                     |       |              |                    |                      |  |
| supports external digital monitor via HDMI or USB Type-C;<br>supports three independent displays;<br>Max resolution: 4096x2160@60Hz (HDMI); 3840x2160@30Hz (USB Type-C) |   |            |   |                |                     |       |              |                    |                      |  |
| Chipset   | Intel HM470 Chipset   |            |   |                |                     |       |              |                    |                      |  |
| Memory  | 32GB max / 2933MHz DDR4, dual-channel capable, two DDR4 SO-DIMM sockets   |            |   |                |                     |       |              |                    |                      |  |
| Display   | <i>One of the following, configurable by model:</i> <ul style="list-style-type: none"> <li>15.6" (396mm) FHD (1920x1080), anti-glare, LED backlight, IPS, 300 nits, 16:9 aspect ratio, 100% sRGB gamut, refresh rate 60Hz</li> <li>15.6" (396mm) FHD (1920x1080), anti-glare, LED backlight, IPS, 300 nits, 16:9 aspect ratio, 100% sRGB gamut, refresh rate 144Hz, Dolby® Vision</li> <li>15.6" (396mm) FHD (1920x1080), anti-glare, LED backlight, IPS, 500 nits, 16:9 aspect ratio, 100% sRGB gamut, refresh rate 240Hz, Dolby Vision</li> </ul> |            |   |                |                     |       |              |                    |                      |  |
| Multi-touch   | None  |            |   |                |                     |       |              |                    |                      |  |
| Storage   | <i>Up to 2 drives:</i> <ul style="list-style-type: none"> <li>HDD / SATA 6.0Gb/s, 2.5" wide, 7mm high</li> <li>M.2 2280 SSD / PCIe NVMe, PCIe 3.0 x 4</li> <li>M.2 2242 SSD / PCIe NVMe, PCIe 3.0 x 4</li> </ul>  |            |   |                |                     |       |              |                    |                      |  |
| Optical   | None  |            |   |                |                     |       |              |                    |                      |  |
| Ethernet  | Gigabit Ethernet connection   |            |   |                |                     |       |              |                    |                      |  |
| WLAN  | 802.11ax 2x2 Wi-Fi + Bluetooth 5.0, M.2 Card  |            |   |                |                     |       |              |                    |                      |  |
| Bluetooth™  | Bluetooth 5.0 wireless, integrated in Wi-Fi + Bluetooth combo adapter   |            |   |                |                     |       |              |                    |                      |  |
| Dimensions  | WxDxH: 14.3" x 10.22" x 0.93"; 363.06mm x 259.61mm x 23.57mm  |            |   |                |                     |       |              |                    |                      |  |
| Weight  | Starting at 5.07 lb / 2.3 kg  |            |   |                |                     |       |              |                    |                      |  |
| Case color  | Iron grey   |            |   |                |                     |       |              |                    |                      |  |
| Case material   | PC/ABS plastic  |            |   |                |                     |       |              |                    |                      |  |
| Lighting  | Legion "Y" logo with white backlit on display cover   |            |   |                |                     |       |              |                    |                      |  |
| Battery   | Integrated Li-ion 60Wh or 80Wh battery, supports Rapid Charge Pro (30 minutes 50%)  |            |   |                |                     |       |              |                    |                      |  |
| Max battery life  | MobileMark® 2018: 7.7 hr (80Wh) or 6.8 hr (60Wh)<br><i>* Battery life varies significantly with settings, usage, &amp; other factors</i>  |            |   |                |                     |       |              |                    |                      |  |
| AC adapter  | 230W slim tip AC adapter  |            |   |                |                     |       |              |                    |                      |  |
| Preload (optional)  | <i>Preloaded operating system</i> <ul style="list-style-type: none"> <li>Windows® 10 Home 64</li> <li>Windows 10 Pro 64</li> </ul> <i>Preloaded applications (only some listed)</i> <ul style="list-style-type: none"> <li>Microsoft Office Trial (with 30-day license)</li> <li>Microsoft Office Home and Business 2019</li> <li>Microsoft Office Home and Student 2019</li> <li>Microsoft Office Professional 2019</li> <li>Microsoft Office Personal 2019</li> <li>Microsoft 365 Personal</li> </ul>   |            |   |                |                     |       |              |                    |                      |  |
| Limited warranty  | <i>One of the following, configurable by model:</i> <ul style="list-style-type: none"> <li>1-year depot repair service</li> <li>1-year depot repair with 2-year system board repair service</li> <li>2-year/1-yr battery depot repair service</li> </ul>  |            |   |                |                     |       |              |                    |                      |  |
| Environment   | ErP lot3; RoHS-compliant  |            |   |                |                     |       |              |                    |                      |  |

Note: The specifications above may not be available in all regions.

Lenovo  
April 2020

# Lenovo Legion 5P 15IMH05H

