

# Lenovo Legion 5P 15IMH05H 82AW0042CK

**Product**

Lenovo Legion 5P 15IMH05H

**Region**

EET

**Country/Region**

Czech, Slovakia

**Machine Type**

82AW

**Processor**

Intel Core i7-10750H (6C / 12T, 2.6 / 5.0GHz, 12MB)

**Graphics**

NVIDIA GeForce RTX 2060 6GB GDDR6

**Chipset**

Intel HM470

**Memory**

2x 8GB SO-DIMM DDR4-2933

**Storage**

1TB SSD M.2 2280 PCIe NVMe

**Display**

15.6" FHD (1920x1080) IPS 300nits Anti-glare, 144Hz

**Touchscreen**

None

**Optical**

None

**Media Reader**

None

**Ethernet**

100/1000M

**WLAN + Bluetooth**

11ax, 2x2 + BT5.0

**Bundled Accessories**

None

**Case Material**

PC / ABS

**Camera**

None

**Microphone**

2x, Array

**Color**

Iron Grey

**Keyboard**

Backlit, Czech / Slovak

**Fingerprint Reader**

None

**TPM**

FW TPM 2.0

**Battery**

Integrated 60Wh

**Power Adapter**

230W Slim Tip

**Operating System**

Windows 10 Home 64, English / Czech / Slovak

**Bundled Software**

Office Trial

**Base Warranty**

2-year, Depot

**Bundled Service**

None

**EAN / UPC / JAN**

195042664690

**End of Support**

2026-05-13

**Announce Date**

2020-04-13

 [WWW.LENOVO.COM](http://WWW.LENOVO.COM)

Lenovo may not offer the products, services or features discussed in this document in other countries. Lenovo may withdraw an offering at any time. Information is subject to change without notice. Consult your local representative for information on offerings available in your area.

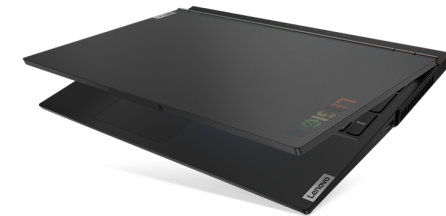
Lenovo reserves the right to change specifications or other product information without notice. Lenovo is not responsible for photographic or typographical errors. Lenovo provides this publication "as is" without warranty of any kind, either express or implied, including the implied warranties of merchantability or fitness for a particular purpose.



<https://psref.lenovo.com>

Visit psref website for the latest version of Product Specifications Reference.

© Lenovo, 2020. All rights reserved.



Lenovo™

# Lenovo Legion 5P 15IMH05H Platform Specifications

Product Specifications Reference (PSREF)



Processor	10th Generation Intel® Core™ i5 / i7 Processor								Media reader Ports	None Four USB 3.1 Gen 1 (one Always On), one USB 3.1 Type-C Gen 1 (with the function of DisplayPort 1.2), HDMI 2.0, Ethernet (RJ-45), headphone / microphone combo jack, security keyhole, AC power adapter jack <i>* Depending on many factors, actual data transfer speed may be lower than theoretical speed</i> Optional: Lenovo Legion M300 RGB Gaming Mouse (USB connector)
	Processor Number	# of Cores	# of Threads	Base Frequency	Max Turbo Frequency	Cache	Memory Types	Processor Graphics		
	i5-10300H	4	8	2.5 GHz	4.5 GHz	8MB	DDR4-2933	Intel UHD Graphics		
	i7-10750H	6	12	2.6 GHz	5.0 GHz	12MB				
i7-10875H	8	16	2.3 GHz	5.1 GHz	16MB					
Graphics	Integrated Graphics		Discrete Graphics (Memory)						Camera Audio support	None HD Audio, Realtek ALC3287 codec / Dolby Atmos® for Gaming Certification, Harman speakers, 2W x 2, dual array microphone, headphone / microphone combo jack
	Intel UHD Graphics		NVIDIA® GeForce® GTX 1660 Ti (6GB GDDR6 memory), VR ready NVIDIA GeForce RTX 2060 (6GB GDDR6 memory), VR ready							
supports external digital monitor via HDMI or USB Type-C; supports three independent displays; Max resolution: 4096x2160@60Hz (HDMI); 3840x2160@30Hz (USB Type-C)										
Chipset	Intel HM470 Chipset									
Memory	32GB max / 2933MHz DDR4, dual-channel capable, two DDR4 SO-DIMM sockets									
Display	<i>One of the following, configurable by model:</i> <ul style="list-style-type: none"> <li>15.6" (396mm) FHD (1920x1080), anti-glare, LED backlight, IPS, 300 nits, 16:9 aspect ratio, 100% sRGB gamut, refresh rate 60Hz</li> <li>15.6" (396mm) FHD (1920x1080), anti-glare, LED backlight, IPS, 300 nits, 16:9 aspect ratio, 100% sRGB gamut, refresh rate 144Hz, Dolby® Vision</li> <li>15.6" (396mm) FHD (1920x1080), anti-glare, LED backlight, IPS, 500 nits, 16:9 aspect ratio, 100% sRGB gamut, refresh rate 240Hz, Dolby Vision</li> </ul>									
Multi-touch	None									
Storage	<i>Up to 2 drives:</i> <ul style="list-style-type: none"> <li>HDD / SATA 6.0Gb/s, 2.5" wide, 7mm high</li> <li>M.2 2280 SSD / PCIe NVMe, PCIe 3.0 x 4</li> <li>M.2 2242 SSD / PCIe NVMe, PCIe 3.0 x 4</li> </ul>									
Optical	None									
Ethernet	Gigabit Ethernet connection									
WLAN	802.11ax 2x2 Wi-Fi + Bluetooth 5.0, M.2 Card									
Bluetooth™	Bluetooth 5.0 wireless, integrated in Wi-Fi + Bluetooth combo adapter									
Dimensions	WxDxH: 14.3" x 10.22" x 0.93"; 363.06mm x 259.61mm x 23.57mm									
Weight	Starting at 5.07 lb / 2.3 kg									
Case color	Iron grey									
Case material	PC/ABS plastic									
Lighting	Legion "Y" logo with white backlit on display cover									
Battery	Integrated Li-ion 60Wh or 80Wh battery, supports Rapid Charge Pro (30 minutes 50%)									
Max battery life	MobileMark® 2018: 7.7 hr (80Wh) or 6.8 hr (60Wh) <i>* Battery life varies significantly with settings, usage, &amp; other factors</i>									
AC adapter	230W slim tip AC adapter									
Preload (optional)	<i>Preloaded operating system</i> <ul style="list-style-type: none"> <li>Windows® 10 Home 64</li> <li>Windows 10 Pro 64</li> </ul> <i>Preloaded applications (only some listed)</i> <ul style="list-style-type: none"> <li>Microsoft Office Trial (with 30-day license)</li> <li>Microsoft Office Home and Business 2019</li> <li>Microsoft Office Home and Student 2019</li> <li>Microsoft Office Professional 2019</li> <li>Microsoft Office Personal 2019</li> <li>Microsoft 365 Personal</li> </ul>									
Limited warranty	<i>One of the following, configurable by model:</i> <ul style="list-style-type: none"> <li>1-year depot repair service</li> <li>1-year depot repair with 2-year system board repair service</li> <li>2-year/1-yr battery depot repair service</li> </ul>									
Environment	ErP lot3; RoHS-compliant									

Note: The specifications above may not be available in all regions.

Lenovo  
April 2020

# Lenovo Legion 5P 15IMH05H

