

## PERFORMANCE

### Processor

Intel® Core™ i7-1165G7 (4C / 8T, 2.8 / 4.7GHz, 12MB)

### Graphics

Integrated Intel Iris® Xe Graphics

### Chipset

Intel SoC Platform

### Memory

16GB Soldered DDR4-3200

### Memory Slots

Memory soldered to systemboard, no slots

### Max Memory

Soldered memory, not upgradable

### Storage

1TB SSD M.2 2280 PCIe 3.0 NVMe

### Storage Support

One drive, 1x M.2 2280 SSD or 1x M.2 2242 SSD

- M.2 2280 SSD up to 1TB
- M.2 2242 SSD up to 512GB

### Card Reader

None

### Optical

None

### Audio Chip

High Definition (HD) Audio

### Speakers

Stereo speakers, 2W x2, Dolby® Atmos®

### Camera

720p

### Microphone

2x, Array

### Battery

Integrated 71Wh

### Max Battery Life

MobileMark® 2014: 16 hr

### Power Adapter

65W USB-C Slim

## DESIGN

### Display

15.6" FHD (1920x1080) IPS 500nits Glossy, 100% sRGB, HDR 400, Dolby Vision™, AGC Soda-lime glass

### Touchscreen

10-point Multi-touch

### Keyboard

Backlit, Czech / Slovak

### Case Color

Dark Moss

### Surface Treatment

Aluminium anodizing stamping

### Case Material

Aluminium (Top), Aluminium (Bottom)

### Pen

Lenovo® Digital Pen

### Dimensions (WxDxH)

356.46 x 235.65 x 17.97-19.25 mm (14.03 x 9.27 x 0.70-0.75 inches)

### Weight

1.9 kg (4.19 lbs)

## SOFTWARE

### Operating System

Windows® 10 Pro 64, Czech / Slovak / English

### Bundled Software

Office Trial

## CONNECTIVITY

### Ethernet

None

### WLAN + Bluetooth™

11ax, 2x2 + BT5.0

### WWAN

None

### NFC

None

### Standard Ports

- 1x USB 3.2 Gen 1
- 1x USB 3.2 Gen 1 (Always On)
- 2x Thunderbolt™ 4 / USB4™ 40Gbps (support data, PD 3.0 and DP 1.4)
- 1x headphone / microphone combo jack (3.5mm)

### Monitor Cable

None

## SECURITY & PRIVACY

### Security Chip

Firmware TPM 2.0

### Fingerprint Reader

Touch Style

### Other Security

Camera privacy shutter

## SERVICE

### Base Warranty

2-year, Depot

### Bundled Service

2Y Premium Care with Onsite upgrade from 2Y Depot/CCI (5WSOT73704)

## ACCESSORIES

### Bundled Accessories

None

## CERTIFICATIONS

### Green Certifications

- ENERGY STAR® 8.0
- ErP Lot 3
- RoHS

### Other Certifications

Intel® Evo Platform

## MODEL

TopSeller : Yes

Announce Date : 2020-12-02

EAN / UPC / JAN : 195477917057

End of Support : 2026-11-14



## Premium Care - Advanced Support from Real People. Real Fast.



### REAL PERSON

Choose how you want to reach us - through the phone, chat or email - our expert technicians will take care of you.



### REAL FAST

Highly trained technicians will provide you real-time solutions, whatever the issue, on your first contact. If needed, our team will schedule an onsite visit for the next business day.



### HASSLE FREE

Getting started' and 'how-to' assistance for hardware and software. Easy solutions that are simple to reach - that's how Premium Care delivers you the ideal support experience.



### PC HEALTH CHECK

Free annual PC Health Check that allows our experts to spot issues before you do so they can resolve them quickly and help you avoid PC problems.

## Accidental Damage Protection - Protection of your PC from the unexpected.

Experience shows that a significant portion of devices may be damaged (and not covered under warranty) in the first three years. Lenovo's Accidental Damage Protection service covers accidents beyond the system warranty such as drops, spills, bumps and even electrical surges. Make sure your new device has maximum protection, avoid unplanned costs and get peace of mind.

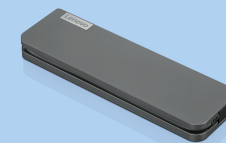
## Base Warranty – Included with the systems you purchase, default 1- or 3-year coverage window.

## Warranty Extensions & Upgrades – Service and protection that's right for your circumstances.

- Pick Up & Return Courier
- Onsite Support
- Technician Installed Customer
- Replaceable Unit Service
- International Warranty Upgrade

Lenovo may not offer the products, services or features discussed in this document in all regions. Lenovo may withdraw an offering at any time. Consult your local representative for information on offerings available in your area. Lenovo reserves the right to change specifications or other product information without notice. Lenovo is not responsible for photographic or typographical errors. Lenovo provides this publication "as is" without warranty of any kind, either express or implied, including the implied warranties of merchantability or fitness for a particular purpose.

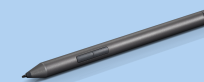
## Recommended Accessories



### Lenovo USB-C Mini Dock\_US

40AU0065US

Expand Your Potential with An Universal Mini Dock; Lenovo understands that modern business depends on a wide variety of PC's and even brands to meet their business needs. To make this easier Lenovo USB-C Mini dock is ...



### Lenovo Digital Pen

GX80U45010

The Lenovo Digital Pen with 4096 levels of pressure sensitivity, provides a natural pencil-like and paper experience when you sketch and jot down notes. Users will also enjoy easy access to short-cut functions through...

For a full list of accessories and services, please visit:  
<https://smartfind.Lenovo.com>

Lenovo

PSREF  
Product Specifications  
Reference