

PERFORMANCE

Processor

AMD Ryzen™ 3 5300U (4C / 8T, 2.6 / 3.8GHz, 2MB L2 / 4MB L3)

Graphics

Integrated AMD Radeon™ Graphics

Chipset

AMD SoC Platform

Memory

8GB Soldered DDR4-3200

Memory Slots

Memory soldered to systemboard, no slots, dual-channel (8GB or 16GB model)

Max Memory

8GB soldered memory, not upgradable

Storage

256GB SSD M.2 2242 PCIe® 3.0x4 NVMe®

Storage Support

Model with 45Wh or 57Wh battery: up to two drives, 1x 2.5" HDD + 1x M.2 SSD

- 2.5" HDD up to 1TB
- M.2 2242 SSD up to 512GB
- M.2 2280 SSD up to 512GB

Card Reader

4-in-1 Card Reader

Optical

None

Audio Chip

High Definition (HD) Audio, Realtek® ALC3287 codec

Speakers

Stereo speakers, 2W x2, optimized with Dolby® Audio™

Camera

HD 720p with Privacy Shutter

Microphone

2x, Array

Battery

Integrated 57Wh

Max Battery Life

MobileMark® 2014: 14 hr (57Wh)

Power Adapter

65W USB-C® (3-pin)

DESIGN

Display

15.6" FHD (1920x1080) IPS 300nits Anti-glare, 45% NTSC

Touchscreen

None

Keyboard

Backlit, Czech / Slovak

Case Color

Platinum Grey

Surface Treatment

Anodizing

Case Material

Aluminium (Top), Aluminium (Bottom)

Dimensions (WxDxH)

356.67 x 233.13 x 16.9-19.1 mm (14.04 x 9.18 x 0.67-0.75 inches)

Weight

Around 1.66 kg (3.66 lbs)

SOFTWARE

Operating System

Windows® 11 Home in S mode, Czech / Slovak / English

Bundled Software

Office Trial

CONNECTIVITY

Ethernet

None

WLAN + Bluetooth®

Wi-Fi® 6 11ax, 2x2 + BT5.1

Standard Ports

- 1x USB 3.2 Gen 1
- 1x USB 3.2 Gen 1 (Always On)
- 1x USB-C 3.2 Gen 1 (support data transfer, Power Delivery 3.0, and DisplayPort™ 1.2)
- 1x HDMI® 1.4b
- 1x Card reader
- 1x Headphone / microphone combo jack (3.5mm)

SECURITY & PRIVACY

Security Chip

Firmware TPM 2.0

Fingerprint Reader

None

Other Security

Camera privacy shutter

SERVICE

Base Warranty

2-year, Depot

Included Upgrade

None

CERTIFICATIONS

Green Certifications

- ENERGY STAR® 8.0
- ErP Lot 3
- RoHS compliant

MODEL

TopSeller : Yes

Announce Date : 2021-10-05

EAN / UPC / JAN : 195713585781

End of Support : 2027-05-13



AMD

- Lenovo reserves the right to change specifications or other product information without notice.
- Product image on this page is a sample, it may not match the real color of this model
- Battery life is an estimated maximum. Actual battery life may vary based on many factors, including screen brightness, active applications, features, power management settings, battery age and conditioning, and other customer preferences

Premium Care - Advanced Support from Real People. Real Fast.



REAL PERSON

Choose how you want to reach us - through the phone, chat or email - our expert technicians will take care of you.



REAL FAST

Highly trained technicians will provide you real-time solutions, whatever the issue, on your first contact. If needed, our team will schedule an onsite visit for the next business day.



HASSLE FREE

'Getting started' and 'how-to' assistance for hardware and software. Easy solutions that are simple to reach - that's how Premium Care delivers you the ideal support experience.



PC HEALTH CHECK

Free annual PC Health Check that allows our experts to spot issues before you do so they can resolve them quickly and help you avoid PC problems.

Accidental Damage Protection - Protection of your PC from the unexpected.

Experience shows that a significant portion of devices may be damaged (and not covered under warranty) in the first three years. Lenovo's Accidental Damage Protection service covers accidents beyond the system warranty such as drops, spills, bumps and even electrical surges. Make sure your new device has maximum protection, avoid unplanned costs and get peace of mind.

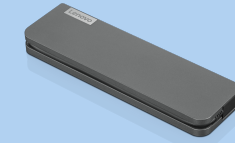
Base Warranty – Included with the systems you purchase, default 1- or 3-year coverage window.

Warranty Extensions & Upgrades – Service and protection that's right for your circumstances.

- Pick Up & Return Courier
- Onsite Support
- Technician Installed Customer
- Replaceable Unit Service
- International Warranty Upgrade

Lenovo may not offer the products, services or features discussed in this document in all regions. Lenovo may withdraw an offering at any time. Consult your local representative for information on offerings available in your area. Lenovo reserves the right to change specifications or other product information without notice. Lenovo is not responsible for photographic or typographical errors. Lenovo provides this publication "as is" without warranty of any kind, either express or implied, including the implied warranties of merchantability or fitness for a particular purpose.

Recommended Accessories



Lenovo USB-C Mini Dock_US

40AU0065US

Expand Your Potential with An Universal Mini Dock; Lenovo understands that modern business depends on a wide variety of PC's and even brands to meet their business needs. To make this easier Lenovo USB-C Mini dock is ...



Lenovo Powered USB-C Travel Hub

4X90S92381

Travel-Ready Productivity Powerhouse; One-stop travel docking is finally here. Connect and charge new and legacy devices wherever you happen to be. Sleek and compact, the Lenovo Powered USB-C Travel Hub fits unlimited...

For a full list of accessories and services, please visit:
<https://smartfind.Lenovo.com>

Lenovo

PSREF
Product Specifications
Reference