



The product images are for illustration purposes only. Actual product appearance, ports, keyboard layout, and accessories may vary by model.

- Intel Core i7-13645HX, 14C (6P + 8E) / 20T, P-core up to 4.9GHz, E-core up to 3.5GHz, 24MB Intel Smart Cache
- 1x 16GB SODIMM DDR5-5600
- 1TB SSD M.2 2242 PCIe 4.0x4 NVMe
- NVIDIA GeForce RTX 5050 8GB GDDR7, Boost Clock 2370MHz, TGP 100W, 440 AI TOPS
- Case color - Luna Grey
- 2-year, Courier or Carry-in

**Premium Care - Advanced Support from Real People. Real Fast.**



**REAL PERSON**

Choose how you want to reach us - through the phone, chat or email - our expert technicians will take care of you.



**REAL FAST**

Highly trained technicians will provide you real-time solutions, whatever the issue, on your first contact. If needed, our team will schedule an onsite visit for the next business day.



**HASSLE FREE**

'Getting started' and 'how-to' assistance for hardware and software. Easy solutions that are simple to reach - that's how Premium Care delivers you the ideal support experience.



**PC HEALTH CHECK**

Free annual PC Health Check that allows our experts to spot issues before you do so they can resolve them quickly and help you avoid PC problems.

**Accidental Damage Protection - Protection of your PC from the unexpected.**

Experience shows that a significant portion of devices may be damaged (and not covered under warranty) in the first three years. Lenovo's Accidental Damage Protection service covers accidents beyond the system warranty such as drops, spills, bumps and even electrical surges. Make sure your new device has maximum protection, avoid unplanned costs and get peace of mind.

**Base Warranty** - Included with the systems you purchase, default 1- or 3-year coverage window.

**Warranty Extensions & Upgrades** - Service and protection that's right for your circumstances.

- Pick Up & Return Courier
- Onsite Support
- Technician Installed Customer
- Replaceable Unit Service
- International Warranty Upgrade

**Recommended Accessories** Czech Republic



ThinkPad Bluetooth Presenter Mouse (Aura Edition)

4Y51T62792



Lenovo Analog In-Ear Headphones Gen II Bulk Package (20pcs)

4XD1T54899



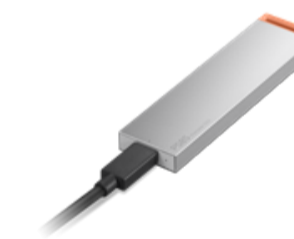
Lenovo Legion 17" Gaming Backpack GB800 (Light Gray)

GX41U39300



Lenovo 245W AC Adapter (Slim tip)-EU

GX21T87702



Lenovo PS8S Portable SSD 4TB

4XB1T91892



Lenovo 310 FHD Webcam Black

GXC1S15024

>> [View More Accessories](#)

**PERFORMANCE****Processor**

Intel Core™ i7-13645HX, 14C (6P + 8E) / 20T, P-core up to 4.9GHz, E-core up to 3.5GHz, 24MB Intel® Smart Cache

**AI PC Category**

AI-Powered Gaming PC<sup>[1]</sup>

**Graphics**

NVIDIA GeForce RTX™ 5050 8GB GDDR7, Boost Clock 2370MHz, TGP 100W, 440 AI TOPS

**Chipset**

Intel® HM770 Chipset

**Memory**

1x 16GB SODIMM DDR5-5600

**Memory Slots**

Two DDR5 SODIMM slots, dual-channel capable

**Max Memory<sup>[2]</sup>**

Up to 32GB DDR5-5600 offering

**Storage**

1TB SSD M.2 2242 PCIe® 4.0x4 NVMe®

**Storage Slot**

Two M.2 2280 PCIe® 4.0 x4 slots

**Max Storage Support<sup>[3]</sup>**

Up to two drives, 2x M.2 SSD • M.2 2242 SSD up to 1TB each

**Optical**

None

**Card Reader**

No Card Reader

**Audio Chip**

High Definition (HD) Audio, Realtek® ALC3287 codec

**Speakers**

Stereo speakers, 2W x2, optimized with Nahimic Audio

**Microphone**

2x, Array

**Camera**

5.0MP with E-shutter

**Battery**

60Wh

**Power Adapter**

170W Slim Tip (3-pin)

**Special Features**

AI Chip: LA1

**DESIGN****Display**

15.6" WQHD (2560x1440) IPS 350nits Anti-glare, 100% sRGB, 165Hz, G-SYNC®<sup>[4]</sup>

**Touchscreen**

None

**Screen-to-Body Ratio**

88% AAR (active area ratio)

**Color Calibration**

No Color Calibration

**Pen**

Pen Not Supported

**Keyboard**

White Backlit, Czech / Slovak

**Touchpad**

Buttonless Mylar® surface multi-touch touchpad, supports Precision TouchPad (PTP), 75 x 120 mm (2.95 x 4.72 inches)

**Dimensions (WxDxH)<sup>[5]</sup>**

359.86 x 258.7 x 21.9-23.9 mm (14.17 x 10.19 x 0.86-0.94 inches)

**Weight<sup>[6]</sup>**

Starting at 2.4 kg (5.29 lbs)

**Case Color**

Luna Grey

**Case Material**

PC-ABS (Top), PC-ABS (Bottom)

**Surface Treatment**

Painting

**SOFTWARE****Operating System**

None

**Bundled Software**

None

**CONNECTIVITY****WLAN + Bluetooth**

Wi-Fi® 6, 802.11ax 2x2 + BT5.2

**WWAN**

WWAN Not Supported

**Ethernet**

100/1000M (RJ-45)

**Standard Ports**

- 3x USB-A (USB 5Gbps / USB 3.2 Gen 1)
- 1x USB-C® (USB 10Gbps / USB 3.2 Gen 2), with USB PD 65-100W and DisplayPort™ 1.4<sup>[7]</sup>
- 1x HDMI® 2.1, up to 8K/60Hz
- 1x Headphone / microphone combo jack (3.5mm)
- 1x Ethernet (RJ-45)
- 1x Slim tip Power connector

**Docking**

Various docking solutions supported via USB-C®. For more compatible docking solutions, please visit [Docking for LOQ™ 15IRX10](#)

**SECURITY & PRIVACY****Security Chip**

Firmware TPM 2.0 Enabled

**Fingerprint Reader**

No Fingerprint Reader

**Other Security**

E-shutter

**SERVICE****Base Warranty**

2-year, Courier or Carry-in

**Included Upgrade**

None

**ACCESSORIES****Bundled Accessories**

None

**CERTIFICATIONS****Green Certifications**

- ErP Lot 6/26
- RoHS compliant

**Other Certifications**

TÜV Rheinland® Low Blue Light (Software Solution)

**MODEL**

**TopSeller** : No **EAN / UPC / JAN:** 199274947767

**Announce Date:** 2026-02-01 **End of Support** : 2031-05-30

**Note:**

[1] AI-Powered Gaming PCs feature Lenovo AI Engine+ and NVIDIA GeForce RTX GPUs to handle AI-driven tasks and deliver exceptional gaming performance.

[2] The max memory is based on the test results with current Lenovo memory offerings.

[3] The storage capacity supported is based on the test results with current Lenovo storage offerings.

[4] IPS (in-plane switching) technology may refer to IPS, PLS, ADS, AHVA, AAS.

[5] The system dimensions may vary depending on configurations.

[6] The system weight is approximate and based on results in Lenovo lab, which varies depending on the source of component, variance of the distribution of each component, and manufacturing process. It may not be the exact weight for each specific model.

[7] Supports Lenovo protocol for 140W charging but requires a unique Lenovo adapter for operation.

- Please refer to the official [Lenovo store website](#) or contact a local Lenovo sales representative or authorized business partner for current inventory and purchase options.
- Lenovo reserves the right to change specifications without notice.