



The product images are for illustration purposes only. Actual product appearance, ports, keyboard layout, and accessories may vary by model.

- Snapdragon X2 Elite X2E-80-100, 12C, Max Turbo up to 4.7GHz (single-core) / 4.4GHz (dual-core), 34MB
- 32GB Soldered LPDDR5X-9523
- 1TB SSD M.2 2242 PCIe 4.0x4 NVMe
- Integrated Qualcomm Adreno GPU
- Windows 11 Home (on ARM), Czech / Slovak / English
- Case color - Cosmic Blue
- 3Y Premium Care with Onsite upgrade from 2Y Depot/CCI CZ&SK (CPN)

Premium Care - Advanced Support from Real People. Real Fast.



REAL PERSON

Choose how you want to reach us - through the phone, chat or email - our expert technicians will take care of you.



REAL FAST

Highly trained technicians will provide you real-time solutions, whatever the issue, on your first contact. If needed, our team will schedule an onsite visit for the next business day.



HASSLE FREE

'Getting started' and 'how-to' assistance for hardware and software. Easy solutions that are simple to reach - that's how Premium Care delivers you the ideal support experience.



PC HEALTH CHECK

Free annual PC Health Check that allows our experts to spot issues before you do so they can resolve them quickly and help you avoid PC problems.

Accidental Damage Protection - Protection of your PC from the unexpected.

Experience shows that a significant portion of devices may be damaged (and not covered under warranty) in the first three years. Lenovo's Accidental Damage Protection service covers accidents beyond the system warranty such as drops, spills, bumps and even electrical surges. Make sure your new device has maximum protection, avoid unplanned costs and get peace of mind.

Base Warranty - Included with the systems you purchase, default 1- or 3-year coverage window.

Warranty Extensions & Upgrades - Service and protection that's right for your circumstances.

- Pick Up & Return Courier
- Onsite Support
- Technician Installed Customer
- Replaceable Unit Service
- International Warranty Upgrade

Recommended Accessories Czech Republic



ThinkPad Bluetooth Presenter Mouse (Aura Edition)

4Y51T62792



Lenovo Yoga Tote Sleeve (14" Grey)

GX41U86727



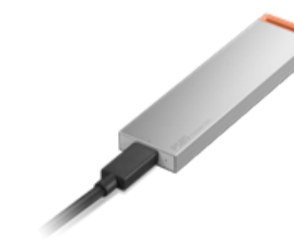
Lenovo Wired VoIP Headset 5000 (Teams)

4XD1R88995



Lenovo Dual USB-C 65W GaN Charger

GOA6065WEU



Lenovo PS8S Portable SSD 4TB

4XB1T91892



Lenovo 4K Pro Webcam

4XC1Q25246

>> [View More Accessories](#)

PERFORMANCE**Processor**

Snapdragon® X2 Elite X2E-80-100, 12C, Max Turbo up to 4.7GHz (single-core) / 4.4GHz (dual-core), 34MB

AI PC Category

Copilot+ PC

NPU

Integrated Qualcomm® Hexagon™ NPU, up to 80 TOPS

Graphics

Integrated Qualcomm® Adreno™ GPU

Chipset

Qualcomm® SoC Platform

Memory

32GB Soldered LPDDR5X-9523

Memory Slots

Memory soldered to systemboard, no slots, dual-channel

Max Memory

32GB soldered memory, not upgradable

Storage

1TB SSD M.2 2242 PCIe® 4.0x4 NVMe®

Storage Slot

One M.2 2242 PCIe® 4.0 x4 slot

Max Storage Support^[1]

One drive, up to 2TB M.2 2242 SSD

Card Reader

No Card Reader

Audio Chip

SoundWire®

Speakers

4 stereo speakers, 2W x2 (woofers), 2W x2 (tweeters), optimized with Dolby Atmos®, Smart Amplifier (AMP)

Microphone

4x, Array

Camera

9.2MP + IR with E-shutter

Battery

70Wh

Power Adapter

No Power Adapter

DESIGN**Display**

14" 2.8K WQXGA+ (2880x1800) OLED 1100nits (peak) / 500nits (typical) Glossy, 100% DCI-P3, 100% sRGB, 99% Adobe® RGB, 120Hz, Eyesafe®, Dolby Vision®, Flicker Free, DisplayHDR™ True Black 1000, X-Rite®, PureSight Pro

Touchscreen

None

Screen-to-Body Ratio

90.5% AAR (active area ratio)

Color Calibration

X-Rite® Factory Color Calibration

Pen

Pen Not Supported

Keyboard

Backlit, Czech / Slovak

Touchpad

Buttonless glass surface multi-touch touchpad, supports Precision TouchPad (PTP), 80 x 135 mm (3.15 x 5.31 inches)

Dimensions (WxDxH)^[2]

312 x 221 x 13.9 mm (12.28 x 8.70 x 0.55 inches)

Weight^[3]

Starting at 1.17 kg (2.58 lbs)

Case Color

Cosmic Blue

Case Material

Aluminium (Top), Aluminium (Bottom)

Surface Treatment

Aluminium Stamping (Anodized with Sandblasting)

SOFTWARE**Operating System**

Windows® 11 Home (on ARM), Czech / Slovak / English

Bundled Software

Office Trial

CONNECTIVITY**WLAN + Bluetooth**

Wi-Fi® 7, 802.11be 2x2 + BT5.4

WWAN

WWAN Not Supported

Ethernet

No onboard Ethernet

Standard Ports

3x USB-C® (USB4® 40Gbps), with USB PD 45-65W and DisplayPort™ 1.4

Docking

Various docking solutions supported via USB-C®. For more compatible docking solutions, please visit [Docking for Yoga® Slim 7 14Q8Y11](#)

SECURITY & PRIVACY**Security Chip**

Firmware TPM 2.0 Enabled

Fingerprint Reader

No Fingerprint Reader

Other Security

- E-shutter
- IR camera for Windows® Hello (facial recognition)

SERVICE**Base Warranty**

2-year, Courier or Carry-in

Included Upgrade

3Y Premium Care with Onsite upgrade from 2Y Depot/CCI CZ&SK (CPN)

ACCESSORIES**Bundled Accessories**

Lenovo® Yoga® Tote Sleeve 14" (Blue)

CERTIFICATIONS**Green Certifications**

- Carbon Neutral Certified
- ENERGY STAR® 9.0
- EPEAT™ Gold Registered^[4]
- ErP Lot 6/26
- RoHS compliant

Mil-Spec Test

MIL-STD-810H military test passed (21 test items)

Other Certifications

- Eyesafe® Certified 2.0
- TÜV Rheinland® Flicker Free
- TÜV Rheinland® Low Blue Light (Hardware Solution)

MODEL

TopSeller : No **EAN / UPC / JAN**: 199274937294
Announce Date: 2026-03-26 **End of Support** : 2032-03-06

Note:

[1] The storage capacity supported is based on the test results with current Lenovo storage offerings.

[2] The system dimensions may vary depending on configurations.

[3] The system weight is approximate and based on results in Lenovo lab, which varies depending on the source of component, variance of the distribution of each component, and manufacturing process. It may not be the exact weight for each specific model.

[4] EPEAT is registered where applicable, please visit [epeat.net](https://www.epeat.net) for registration status by country.

- Please refer to the official [Lenovo store website](#) or contact a local Lenovo sales representative or authorized business partner for current inventory and purchase options.
- Lenovo reserves the right to change specifications without notice.