



The product images are for illustration purposes only. Actual product appearance, ports, keyboard layout, and accessories may vary by model.

- Intel Core Ultra 5 325, 8C (4P + 4LPE) / 8T, Max Turbo up to 4.5GHz, 12MB Intel Smart Cache
- 2x 8GB SODIMM DDR5-5600
- 1TB SSD M.2 2242 PCIe 4.0x4 NVMe
- Integrated Intel Graphics
- Windows 11 Home, Czech / Slovak / English
- Case color - Luna Grey
- 2-year, Courier or Carry-in

Premium Care - Advanced Support from Real People. Real Fast.



REAL PERSON

Choose how you want to reach us - through the phone, chat or email - our expert technicians will take care of you.



REAL FAST

Highly trained technicians will provide you real-time solutions, whatever the issue, on your first contact. If needed, our team will schedule an onsite visit for the next business day.



HASSLE FREE

'Getting started' and 'how-to' assistance for hardware and software. Easy solutions that are simple to reach - that's how Premium Care delivers you the ideal support experience.



PC HEALTH CHECK

Free annual PC Health Check that allows our experts to spot issues before you do so they can resolve them quickly and help you avoid PC problems.

Accidental Damage Protection - Protection of your PC from the unexpected.

Experience shows that a significant portion of devices may be damaged (and not covered under warranty) in the first three years. Lenovo's Accidental Damage Protection service covers accidents beyond the system warranty such as drops, spills, bumps and even electrical surges. Make sure your new device has maximum protection, avoid unplanned costs and get peace of mind.

Base Warranty - Included with the systems you purchase, default 1- or 3-year coverage window.

Warranty Extensions & Upgrades - Service and protection that's right for your circumstances.

- Pick Up & Return Courier
- Onsite Support
- Technician Installed Customer
- Replaceable Unit Service
- International Warranty Upgrade

Recommended Accessories Czech Republic



ThinkPad Bluetooth Presenter Mouse (Aura Edition)

4Y51T62792



Lenovo USB-C 100W AC Adapter-EU

GX21V43585



Lenovo 16" Laptop Everyday Backpack B510

4X41U80414



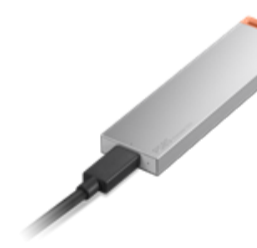
Lenovo Analog In-Ear Headphones Gen II Bulk Package (20pcs)

4XD1T54899



ThinkPad Thunderbolt 4 Smart Dock Gen2 7500 - US

40BE0135US



Lenovo PS8S Portable SSD 4TB

4XB1T91892

>> [View More Accessories](#)

PERFORMANCE**Processor**

Intel Core™ Ultra 5 325, 8C (4P + 4LPE) / 8T, Max Turbo up to 4.5GHz, 12MB Intel® Smart Cache

AI PC Category

Copilot+ PC^[1]

NPU

Up to 47 TOPS

Graphics

Integrated Intel® Graphics

Chipset

Intel® SoC Platform

Memory

2x 8GB SODIMM DDR5-5600

Memory Slots

Two DDR5 SODIMM slots, dual-channel capable

Max Memory^[2]

Up to 32GB DDR5-5600 offering

Storage

1TB SSD M.2 2242 PCIe® 4.0x4 NVMe®

Storage Slot

Two M.2 slots • One M.2 2242 PCIe® 4.0 x4 slot • One M.2 2280 PCIe® 4.0 x4 slot

Max Storage Support^{[3][4]}

Up to two drives, 2x M.2 SSD • M.2 2242 SSD up to 1TB

Card Reader

microSD Card Reader

Audio Chip

High Definition (HD) Audio

Speakers

Stereo speakers, 2W x2, optimized with Dolby Audio™

Microphone

2x, Array

Camera

FHD 1080p + IR with Privacy Shutter, ToF Sensor

Battery

60Wh

Power Adapter

No Power Adapter

DESIGN**Display**

16" WUXGA (1920x1200) IPS 400nits Anti-glare, 45% NTSC, 60Hz^[5]

Touchscreen

None

Screen-to-Body Ratio

90% AAR (active area ratio)

Pen

Pen Not Supported

Keyboard

Backlit, Czech / Slovak

Touchpad

Buttonless Mylar® surface multi-touch touchpad, supports Precision TouchPad (PTP), 75 x 120 mm (2.95 x 4.72 inches)

Dimensions (WxDxH)^[6]

356.5 x 250.6 x 16.9 mm (14.03 x 9.87 x 0.67 inches)

Weight^[7]

Starting at 1.85 kg (4.08 lbs)

Case Color

Luna Grey

Case Material

Aluminium (Top), Aluminium (Bottom)

Surface Treatment

Anodizing Sandblasting

SOFTWARE**Operating System**

Windows® 11 Home, Czech / Slovak / English

Bundled Software

Office Trial

CONNECTIVITY**WLAN + Bluetooth**

Wi-Fi® 7, 802.11be 2x2 + BT5.4

WWAN

WWAN Not Supported

Ethernet

No Onboard Ethernet

Standard Ports

- 1x USB-A (USB 5Gbps), Always On
- 1x USB-A (USB 5Gbps)
- 2x USB-C® (USB 10Gbps), with USB PD 3.0 and DisplayPort™ 1.2
- 1x HDMI® 2.1, up to 4K/60Hz
- 1x Headphone / microphone combo jack (3.5mm)
- 1x microSD card reader

Docking

Various docking solutions supported via USB-C®. For more compatible docking solutions, please visit [Docking for IdeaPad® Slim 5 16IPH11](#)

SECURITY & PRIVACY**Security Chip**

Firmware TPM 2.0 Enabled

Fingerprint Reader

No Fingerprint Reader

Other Security

- Camera privacy shutter
- IR camera for Windows® Hello (facial recognition)

SERVICE**Base Warranty**

2-year, Courier or Carry-in

Included Upgrade

None

ACCESSORIES**Bundled Accessories**

None

CERTIFICATIONS**Green Certifications**

- ENERGY STAR® 9.0
- EPEAT™ Gold Registered
- ErP Lot 6/26
- RoHS compliant

Mil-Spec Test

MIL-STD-810H military test passed (21 test items)

Other Certifications

- TÜV Rheinland® Low Blue Light (Software Solution)
- TÜV Rheinland® Flicker Free

MODEL

Product : IdeaPad® Slim 5 16IPH11 | IdeaPad® Slim 5i (16", 11)

TopSeller : No **EAN / UPC / JAN**: 199274947118

Announce Date: 2026-02-20 **End of Support** : 2032-02-05

Note:

[1] Copilot+ PCs have at least 16GB RAM, 256GB storage, and a NPU that runs 40+ TOPs to run the latest AI tools build-in latest Windows 11 to accelerate productivity and creativity.

[2] The max memory is based on the test results with current Lenovo memory offerings.

[3] The storage capacity supported is based on the test results with current Lenovo storage offerings.

[4] The system supports dual SSD via two M.2 slots, but Lenovo offers only one SSD configuration with a second slot for user self-expansion.

[5] IPS (in-plane switching) technology may refer to IPS, PLS, ADS, AHVA, AAS.

[6] The system dimensions may vary depending on configurations.

[7] The system weight is approximate and based on results in Lenovo lab, which varies depending on the source of component, variance of the distribution of each component, and manufacturing process. It may not be the exact weight for each specific model.

• Please refer to the official [Lenovo store website](#) or contact a local Lenovo sales representative or authorized business partner for current inventory and purchase options.

• Lenovo reserves the right to change specifications without notice.