

PERFORMANCE

Processor

Intel® Core™ i7-13700, 16C (8P + 8E) / 24T, Max Turbo up to 5.2GHz, P-core 2.1 / 5.1GHz, E-core 1.5 / 4.1GHz, 30MB

Processor Sockets

1x FCLGA1700

Integrated Graphics

Integrated Intel UHD Graphics 770

Discrete Graphics

None

Chipset

Intel Q670 Chipset

Memory

1x 16GB SO-DIMM DDR5-4800 Non-ECC

Memory Slots

Two DDR5 SO-DIMM slots, dual-channel capable

Max Memory^[1]

Up to 64GB (2x 32GB DDR5 SO-DIMM)

M.2 SSD RAID Controller

Integrated NVMe® controller

M.2 SSD Drive

1x 512GB SSD M.2 2280 PCIe® 4.0x4 Performance NVMe Opal

Storage Support^[2]

Up to two drives, 2x M.2 SSD, up to 2TB each

Optical

None

Audio Chip

High Definition (HD) Audio, Realtek® ALC256VB codec

Power Supply

230W 90% Adapter

DESIGN

Keyboard

USB Traditional Keyboard, Black, Czech / Slovak

Mouse

USB Calliope Mouse, Black

Expansion Slots^[3]

One PCIe 4.0 x8, low-profile

M.2 Slots

- Two M.2 PCIe Gen 4x4 slots (for SSD)
- One M.2 slot (for WLAN)

Bays

No bays

Dust Filter

None

Toolless Chassis Screw

Toolless Chassis Screw

Mounting

None

Stand

None

Dimensions (WxDxH)^[4]

- Tiny only|179 x 182.9 x 37mm with rubber feet (7.0 x 7.2 x 1.5 inches with rubber feet)
- Tiny & ODD|204.2 x 186.6 x 64 mm with rubber feet (8.04 x 7.35 x 2.52 inches with rubber feet)

Weight^[5]

1.4 kg (3 lbs, maximum configuration)

CONNECTIVITY

Onboard Ethernet

Intel I219-LM, 1x GbE RJ-45

Optional Ethernet

None

WLAN + Bluetooth^[6]

Intel Wi-Fi® 6E AX211, 11ax 2x2 + BT5.1, vPro®

Front Ports

- 1x USB-C® 3.2 Gen 2 (support data transfer)
- 1x USB 3.2 Gen 2
- 1x USB 3.2 Gen 2 (Always On and 5V@2.1A charging)
- 1x headphone / microphone combo jack (3.5mm)

Rear Ports^[7]

- 2x USB 3.2 Gen 1 (one supports Smart Power On)
- 2x USB 3.2 Gen 2
- 1x HDMI® 2.1 TMDS
- 1x DisplayPort™ 1.4
- 1x Ethernet (RJ-45)

Optional Rear Ports (configured)

None

SECURITY & PRIVACY

Security Chip

Discrete TPM 2.0, TCG certified, FIPS 140-2 certified

Physical Locks

Kensington® Security Slot™, 3 x 7 mm

Cable Lock

None

Chassis Intrusion Switch

Chassis Intrusion Switch

MANAGEABILITY

System Management^[8]

Intel® vPro® Enterprise with Intel AMT 16

SERVICE

Base Warranty

3-year, Onsite

Included Upgrade

None

CERTIFICATIONS

Case Color

Black

Green Certifications^[9]

- ENERGY STAR® 8.0
- EPEAT™ Gold Registered
- ErP Lot 3
- RoHS compliant
- TCO Certified 9.0

ISV Certifications

Please visit [ISV certifications for Lenovo® Workstations](#)

Mil-Spec Test

MIL-STD-810H military test passed

SOFTWARE

Operating System

Windows® 11 Pro, Czech / Slovak / English

Bundled Software

None

MODEL

TopSeller : Yes **Announce Date** : 2023-03-30

EAN / UPC / JAN : 0196804546285 **End of Support** : 2031-04-30

Note:

^[1] The max memory is based on the test results with current Lenovo memory offerings.

^[2] The storage capacity supported is based on the test results with current Lenovo storage offerings.

^[3] Supports discrete graphic card by x16 riser card (x8 signal), and supports Ethernet card / Thunderbolt 4 / serial card by x4 riser card. Riser card comes with the expansion cards.

^[4] The system dimensions may vary depending on configurations.

^[5] The system weight is approximate and based on results in.....

· Lenovo reserves the right to change specifications without notice.

To see more note information, please link to

<https://psref.lenovo.com/Detail/2231?M=30H0000GCK>

Premier Support - A direct 24x7x365 line to our most elite technicians.



Advanced technical support, 24x7x365, in more than 100 markets



Technical Account Managers for proactive relationship and escalation management



Comprehensive hardware & OEM software support



Priority on service delivery and repair parts



Single point of contact for simplified end-to-end case management



Lenovo Service Connect Portal for customized reporting and product support

Accidental Damage Protection - Protection of your PC from the unexpected.

Experience shows that a significant portion of devices may be damaged (and not covered under warranty) in the first three years. Lenovo's Accidental Damage Protection service covers accidents beyond the system warranty such as drops, spills, bumps and even electrical surges. Make sure your new device has maximum protection, avoid unplanned costs and get peace of mind.

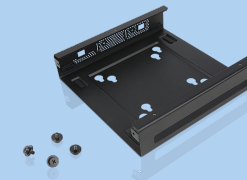
Base Warranty - Included with the systems you purchase, default 1- or 3-year coverage window.

Warranty Extensions & Upgrades - Service and protection that's right for your circumstances.

- Pick Up & Return Courier
- Onsite Support
- Technician Installed Customer
- Replaceable Unit Service
- International Warranty Upgrade

Lenovo may not offer the products, services or features discussed in this document in all regions. Lenovo may withdraw an offering at any time. Information is subject to change without notice. Consult your local representative for information on offerings available in your area. Lenovo reserves the right to change specifications or other product information without notice. Lenovo is not responsible for photographic or typographical errors. Lenovo provides this publication "as is" without warranty of any kind, either express or implied, including the implied warranties of merchantability or fitness for a particular purpose.

Recommended Accessories



ThinkCentre Tiny VESA Mount II

4XFON03161

The ThinkCentre Tiny VESA Mount II is a unique design specific to house the Tiny PC while featuring the universal VESA mount configuration. The VESA standard enables this mount to attach to anything that is VESA comp...



Lenovo Essential FHD Webcam

4XC1B34802

The Lenovo FHD Webcam is powered by a Full HD 1080P 2 Megapixel CMOS camera that allows your friends, family, and colleagues to see you as clear as day, even when they are worlds away. With full stereo dual-mics that ...

For a full list of accessories and services, please visit:
<https://smartfind.Lenovo.com>

Lenovo

PSREF
Product Specifications
Reference