

## PERFORMANCE

### Processor

AMD Ryzen™ 7 7840HS (8C / 16T, 3.8 / 5.1GHz, 8MB L2 / 16MB L3)

### Graphics

Integrated AMD Radeon™ 780M Graphics

### Chipset

AMD SoC Platform

### Memory

16GB Soldered LPDDR5-6400

### Memory Slots

Memory soldered to systemboard, no slots, dual-channel

### Max Memory

16GB soldered memory, not upgradable

### Storage

512GB SSD M.2 2280 PCIe® 4.0x4 NVMe®

### Storage Support<sup>[1]</sup>

Up to two drives, 1x M.2 SSD + 1x open M.2 SSD  
• M.2 SSD up to 1TB each

### Card Reader

None

### Optical

None

### Audio Chip

High Definition (HD) Audio

### Speakers

5Wx2, JBL® Brand

### Camera

Removable 5.0MP + IR

### Microphone

2x, Array

### Power Supply

170W 89% Adapter

## DESIGN

### Display<sup>[2]</sup>

27" QHD (2560x1440) IPS 350nits Anti-glare, 95% DCI-P3, 4-side Borderless

### Touchscreen

Non-touch

### Keyboard

Euterpe Wireless Keyboard, Silver, Czech / Slovak

### Mouse

Wireless Euterpe Mouse, Silver

### Expansion Slots

Three M.2 slots (one for WLAN, two for SSD)

### Case Color

Cloud Grey

### System Lighting

Default

### Cooler

Default

### Stand

AIO Stand

### Pen

No support

### Form Factor

AIO (27 inches)

### Dimensions (WxDxH)<sup>[3]</sup>

614.8 x 242 x 513.35 mm (24.2 x 9.52 x 20.21 inches)

### Weight<sup>[4]</sup>

Around 16.45 kg (36.26 lbs)

## CONNECTIVITY

### Ethernet

Integrated 100/1000M

### WLAN + Bluetooth®

Wi-Fi® 6E, 11ax 2x2 + BT5.1

### Top Ports

1x camera connector

### Rear Ports

- 1x USB-C® 3.2 Gen 2
- 1x USB 3.2 Gen 2 (Always On)
- 2x USB 2.0
- 1x DP out 1.4
- 1x Ethernet (RJ-45)
- 1x power connector

### Left Ports

- 1x USB-C 3.2 Gen 2 (support data transfer, DP 1.4, and up to 95w PD)
- 1x USB 3.2 Gen 2
- 1x headphone / microphone combo jack (3.5mm)

## SECURITY & PRIVACY

### Security Chip

Firmware TPM 2.0 integrated in SoC

## SERVICE

### Base Warranty

2-year, Courier or Carry-in

### Included Upgrade

3Y Premium Care with Onsite upgrade from 2Y Courier/Carry-in

## CERTIFICATIONS

### Green Certifications

- ENERGY STAR® 8.0
- ErP Lot 3 and Lot 7
- GREENGUARD®
- RoHS compliant

### Other Certifications

TÜV Rheinland® Low Blue Light (Hardware Solution)

## SOFTWARE

### Operating System

Windows® 11 Pro, Czech / Slovak / English

### Bundled Software

None

## ACCESSORIES

### Bundled Accessories

None

## MODEL

|                        |                |                       |              |
|------------------------|----------------|-----------------------|--------------|
| <b>TopSeller</b>       | : Yes          | <b>Announce Date</b>  | : 2023-10-30 |
| <b>EAN / UPC / JAN</b> | : 197531453778 | <b>End of Support</b> | : 2029-09-30 |

Product image is a sample, it may not match the real color of this model

Note:

[1] The max capacity of each disk type is based on the test results with current Lenovo storage offerings.

[2] IPS (in-plane switching) technology may refer to IPS,.....

· Lenovo reserves the right to change specifications without notice.

To see more note information, please link to

<https://psref.lenovo.com/Detail/2349?M=FOHK001LCK>

## Premium Care - Advanced Support from Real People. Real Fast.



### REAL PERSON

Choose how you want to reach us - through the phone, chat or email - our expert technicians will take care of you.



### REAL FAST

Highly trained technicians will provide you real-time solutions, whatever the issue, on your first contact. If needed, our team will schedule an onsite visit for the next business day.



### HASSLE FREE

'Getting started' and 'how-to' assistance for hardware and software. Easy solutions that are simple to reach - that's how Premium Care delivers you the ideal support experience.



### PC HEALTH CHECK

Free annual PC Health Check that allows our experts to spot issues before you do so they can resolve them quickly and help you avoid PC problems.

## Accidental Damage Protection - Protection of your PC from the unexpected.

Experience shows that a significant portion of devices may be damaged (and not covered under warranty) in the first three years. Lenovo's Accidental Damage Protection service covers accidents beyond the system warranty such as drops, spills, bumps and even electrical surges. Make sure your new device has maximum protection, avoid unplanned costs and get peace of mind.

## Base Warranty – Included with the systems you purchase, default 1- or 3-year coverage window.

## Warranty Extensions & Upgrades – Service and protection that's right for your circumstances.

- Pick Up & Return Courier
- Technician Installed Customer
- Onsite Support
- Replaceable Unit Service
- International Warranty Upgrade

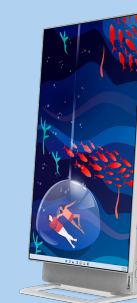
Lenovo may not offer the products, services or features discussed in this document in all regions. Lenovo may withdraw an offering at any time. Consult your local representative for information on offerings available in your area. Lenovo reserves the right to change specifications or other product information without notice. Lenovo is not responsible for photographic or typographical errors. Lenovo provides this publication "as is" without warranty of any kind, either express or implied, including the implied warranties of merchantability or fitness for a particular purpose.



AMD



AMD



AMD

# Lenovo

**PSREF**  
Product Specifications  
Reference