

PERFORMANCE

Processor

Qualcomm® Snapdragon™ 662 (8C, 8x Kryo 260 @2.0GHz)

Graphics

Integrated Qualcomm Adreno 610 GPU

Chipset

Qualcomm SoC Platform

Memory

6GB LPDDR4x (uMCP, DRAM)

Storage

128GB (uMCP, UFS 2.1)

Expandable Memory

MicroSD card (Up to 1TB, exFAT)

Card Reader

MicroSD Card Slot

Storage Support

- 128GB uMCP (UFS-Based MCP, UFS 2.1) on systemboard
- MicroSD card, supports FAT32 up to 512GB, exFAT up to 1TB

Camera

Front 8.0MP / Rear 13.0MP

Microphone

2x, Array

Speakers

4 side stereo speakers with low power DSP, Dolby® Atmos®

Sensors

- Accelerometer (G) sensor
- Hall sensor
- Gyroscope sensor
- Ambient light sensor (ALS)

Vibrator

Vibrator

Battery

Integrated 7500mAh

Max Battery Life

Standby Time: Over 4 wks

Online Video Playback Time: 12 hr

Talk Time: 15 hrs

Browsing Time: 12 hr

Music playtime: 15 hr

Charging Time

Over 3 hr

Power Adapter

10V / 2.0A

DESIGN

Display

11" 2K (2000x1200) IPS TDDI 400nits

Touchscreen

10-point Multi-touch

Case Material

Metal + PC + GF

Pen

None

Water Proofing

IP52

Dimensions (WxDxH)

Pad: 258.4 x 7.5 x 163 mm (10.17 x 0.29 x 6.41 inches)

Smart Charging Station 2: 125.3 x 11.53 x 92.61 mm (4.93 x 0.45 x 3.64 inches)

Weight

Pad: Around 490 g (1.08 lbs)

Smart Charging Station 2: 260 g (0.57 lbs)

Case Color

Slate Grey

SOFTWARE

Operating System

Android 10

Preinstalled Software

- Google Play
- Google Photos
- Dolby Atmos
- Amazon Music
- Office
- Tips
- Google Chrome
- Google
- Netflix
- Gmail
- Google Kids Space
- Squid

CONNECTIVITY

WLAN + Bluetooth™

11a/b/g/n/ac, 1x1 + BT5.1

WWAN

None

SIM Card

No SIM card

VoiceCall

No

Standard Ports

- 1x Pogo pin connector (4-point)
- 1x USB-C 2.0 (support OTG, data transfer, Power Delivery, T-Hub, and USB Type-C audio devices)

Optional Ports

1x microSD card slot (WiFi model)

SERVICE

Base Warranty

2-year, Mail-in

ACCESSORIES

Bundled Accessories

Smart Charging Station (Cradle)

CERTIFICATIONS

Green Certifications

- ENERGY STAR® 8.0
- RoHS compliant

Other Certifications

TÜV Low Blue Light certified

MODEL

TopSeller : No

Announce Date : 2020-11-10

EAN / UPC / JAN : 195348565509



The product image is a sample, it may not match the real color of this model

For a full list of this model's configurations and device specifications, please visit: <https://psref.Lenovo.com>

Premium Care - Advanced Support from Real People. Real Fast.



REAL PERSON

Choose how you want to reach us - through the phone, chat or email - our expert technicians will take care of you.



REAL FAST

Highly trained technicians will provide you real-time solutions, whatever the issue, on your first contact. If needed, our team will schedule an onsite visit for the next business day.



HASSLE FREE

Getting started' and 'how-to' assistance for hardware and software. Easy solutions that are simple to reach - that's how Premium Care delivers you the ideal support experience.



PC HEALTH CHECK

Free annual PC Health Check that allows our experts to spot issues before you do so they can resolve them quickly and help you avoid PC problems.

Accidental Damage Protection - Protection of your PC from the unexpected.

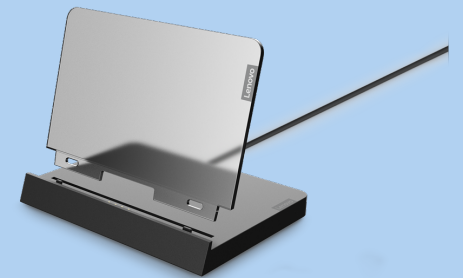
Experience shows that a significant portion of devices may be damaged (and not covered under warranty) in the first three years. Lenovo's Accidental Damage Protection service covers accidents beyond the system warranty such as drops, spills, bumps and even electrical surges. Make sure your new device has maximum protection, avoid unplanned costs and get peace of mind.

Base Warranty – Included with the systems you purchase, default 1- or 3-year coverage window.

Warranty Extensions & Upgrades – Service and protection that's right for your circumstances.

- Pick Up & Return Courier
- Onsite Support
- Technician Installed Customer
- Replaceable Unit Service
- International Warranty Upgrade

Lenovo may not offer the products, services or features discussed in this document in all regions. Lenovo may withdraw an offering at any time. Consult your local representative for information on offerings available in your area. Lenovo reserves the right to change specifications or other product information without notice. Lenovo is not responsible for photographic or typographical errors. Lenovo provides this publication "as is" without warranty of any kind, either express or implied, including the implied warranties of merchantability or fitness for a particular purpose.



For a full list of accessories and services, please visit:
<https://smartfind.Lenovo.com>

Lenovo

PSREF
Product Specifications
Reference